



# General Catalogue

Neck, Spinal, Upper Limb Orthosis and  
Lower Limb Orthosis

neck



spinal



upper limb  
orthosis



lower limb  
orthosis

The OrthoPrim logo, featuring a stylized red and orange 'O' followed by the text 'OrthoPrim' in a dark blue font.

OrthoPrim

# Index

## Neck

Cervical pillow/collars	4
Cervical collars	5

## Spinal

Shoulder support	8
Corsets	9
TLO	11
TLSO	11
Hyperextension orthosis	12

## Back Supports

Orthoprim LC semi-rigid	15
Gold Back semi-rigid	17
Olympia semi-rigid	19
Tensoelastic	20
Orthoprim LT	21
Valdos	22
Elastic	23
Traditional elastic	24
Industrial back supports	26
Neoprene	27

## Upper Limb Orthosis

Armslings	28
Shoulder orthosis	30
Abduction orthosis	31
Elbow supports	32
Neoprene orthosis	33
Textile wrist orthosis	34
Rheumatic orthosis	39
Orthoprim three-layers orthosis	39
Plastic orthosis	40
Dynamic orthosis	42
Thumb orthosis	44
Finger splints	44

# Index

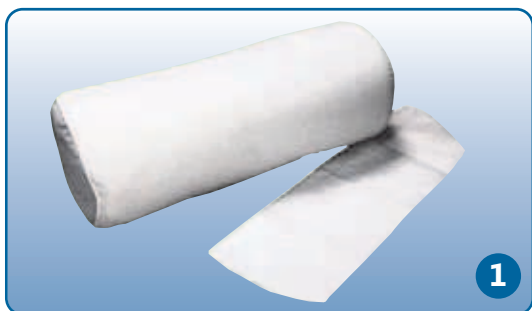
## Lower Limb Orthosis

Pediatric abduction splints	45
Hip orthosis	46
Thigh Orthosis	47
Top line knee braces	48
Neoprim neoprene knee braces	49
Orthoprim LT breathable knee braces	51
Elasil	52
Top Line	52
Maple knee braces	53
Knee immobiliser	54
Neoprene rom knee braces	55
Crom knee braces	56
Orthosis for genu recurvatum	56
Postarthroscopy knee brace	56
Neoprene ankle supports	57
Ankle immobiliser	58
Ankle supports	59
Droop foot orthosis	60
Postsurgical shoe	62
Pediatric orthosis	63

## Aids

Wheelchairs cushions	64
Shoulder rehabilitation kit	64

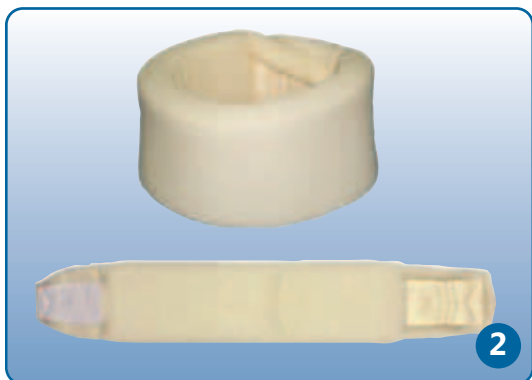
## CERVICAL PILLOW/COLLARS



### 1-CERVICAL PILLOW CERVIPILLO 1001 AND PILLOWSLIP F1001

The Cervipillo is a cervical pillow, which provides comfortable sleeping and avoids neck pain. Cylindrical shape and filled-in with a special fibre allowing the recuperation of its natural shape after its use. Pillowslip included but also available as an accessory.

SIZES:	Circumference	Height
SINGLE	18 cm	44 cm



### 2-STANDARD SOFT CERVICAL COLLAR CC19

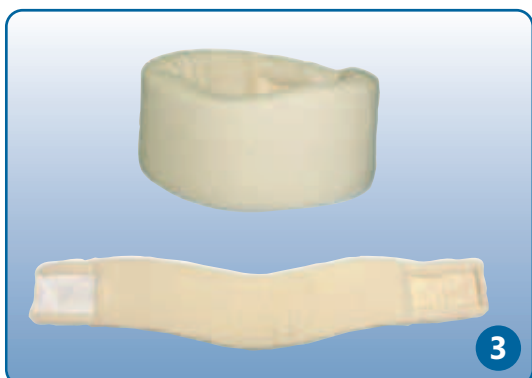
Soft and straight cervical collar made of foam covered by cotton stockinette. Velcro closures. Ivory colour.

**INDICATIONS:** Neck pain syndrome. Degenerative diseases. Acute or chronic cervical syndromes.

Postoperative, for stabilization and support.

**MEASUREMENT:** Neck circumference.

SIZES:	Circumference	Height
XS	32-44 cm	8 cm
S	37-49 cm	8 cm
M	42-54 cm	10 cm
L	48-60 cm	10 cm



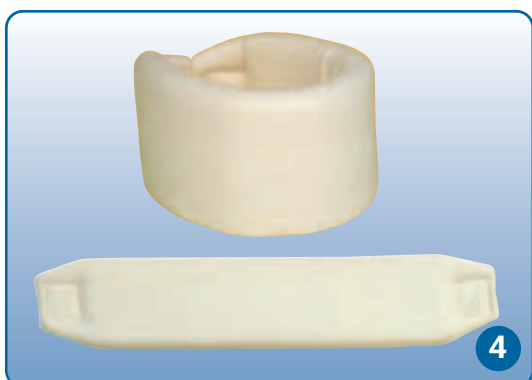
### 3-CONTOURED SOFT CERVICAL COLLAR CC20

Similar to model CC19, but with anatomic design for a better fitting. Velcro closures. Ivory colour.

**INDICATIONS:** Neck pain syndrome. Degenerative diseases. Acute or chronic cervical syndromes. Postoperative for stabilization and support.

**MEASUREMENTS:** Neck circumference, with 3 possible heights for each size.

SIZES:	Circumference	Height
S/low	42-54 cm	8 cm
S/medium	42-54cm	9 cm
S/high	42-54 cm	11 cm
L/low	47-59 cm	8 cm
L/medium	47-59 cm	9 cm
L/high	47-59 cm	11 cm



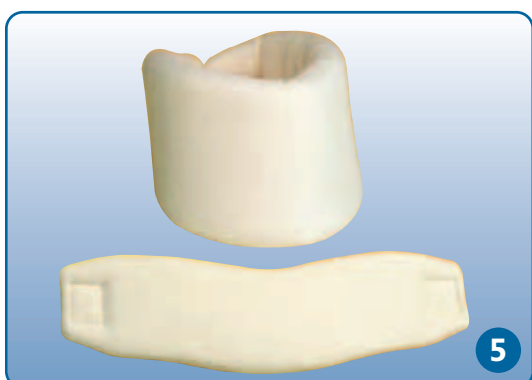
### 4-STANDARD SOFT CERVICAL COLLAR CC119

Standard cervical collar made of foam and covered by tubular cotton shape. Velcro closures. Colour: Ivory. Pack of 5 units.

**INDICATIONS:** Neck pain syndrome. Degenerative diseases. Acute or chronic cervical syndromes. Postoperative, for stabilization and support.

**MEASUREMENT:** Neck circumference.

SIZES:	Circumference	Height
S	35-38 cm	8 cm
M	38-41 cm	9 cm
L	41-43 cm	11 cm
XL	43-48 cm	11 cm



### 5-CONTOURED SOFT COLLAR CC120

Very similar to CC119 but with contoured design. Velcro closures. Colour: Ivory. Pack of 5 units.

**INDICATIONS:** Neck pain syndrome. Degenerative diseases. Acute or chronic cervical syndromes. Postoperative for stabilization and support.

**MEASUREMENTS:** Neck circumference.

SIZES:	Circumference	Height
S/low	35-38 cm	8 cm
M/low	38-41 cm	8 cm
M/medium	38-41 cm	9 cm
L/medium	41-43 cm	9 cm
L/high	41-43 cm	11 cm
XL/high	43-48 cm	11 cm

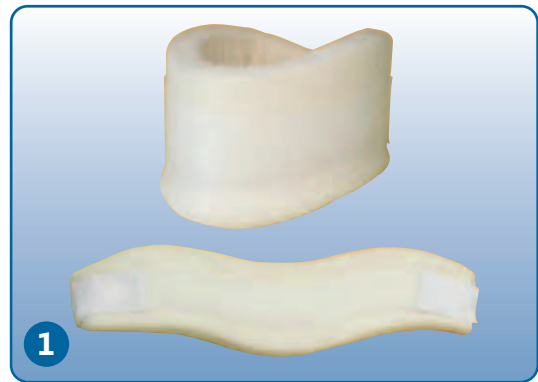
## 1-SEMI-RIGID CONTOURED CERVICAL COLLAR CC121

Contoured collar with a plastic reinforcement providing more rigidity. Velcro closures. Colour: Ivory.

**INDICATIONS:** Acute cervical syndromes. Postoperative treatment of cervical vertebrae. Cervical hernia. Cervical arthritis.

**MEASUREMENTS:** Neck circumference.

SIZES:	Circumference	Height
S/low	35-38 cm	8 cm
S/medium	35-38 cm	9 cm
M/low	38-41 cm	8 cm
M/medium	38-41 cm	9 cm
L/medium	41-43 cm	9 cm
L/high	41-43 cm	11 cm
XL/medium	43-48 cm	9 cm
XL/high	43-48 cm	11 cm



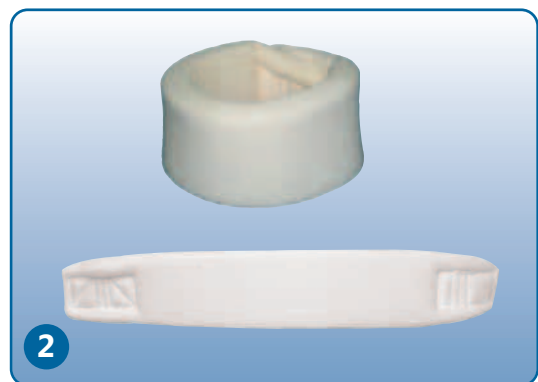
## 2-STANDARD SOFT CERVICAL COLLAR CERVICO

External stockinette made of polyamide 100%; interior made of polyurethane foam and polyester base. Velcro closures. Ivory colour.

**INDICATIONS:** Neck pain syndromes. Degenerative diseases. Acute or chronic cervical syndromes. Postoperative for stabilization and support.

**MEASUREMENT:** Neck circumference

SIZES:	Circumference	Height
S	37-49 cm	8 cm
M	42-54 cm	10 cm
L	47-59 cm	10 cm



## 3-SEMI RIGID CONTOURED CERVICAL COLLAR CERVICO

Collar with same characteristics as Standard CERVICO model but with contoured design and plastic reinforcement providing more rigidity. Colour: Ivory.

**INDICATIONS:** Neck pain syndromes. Degenerative diseases. Acute or chronic cervical syndromes. Postoperative.

**MEASUREMENTS:** Neck circumference.

SIZES:	Circumference	Height
M/low	42-54 cm	8 cm
M/medium	42-54 cm	9 cm
M/high	42-54 cm	11 cm
L/low	47-59 cm	8 cm
L/medium	47-59 cm	9 cm
L/high	47-59 cm	11 cm



## 4-CONTOURED SOFT CERVICAL COLLAR CERVICO

External stockinette made of polyamide 100%; interior made of polyurethane foam and polyester base. Velcro closures. Ivory colour. Two models available: short and long.

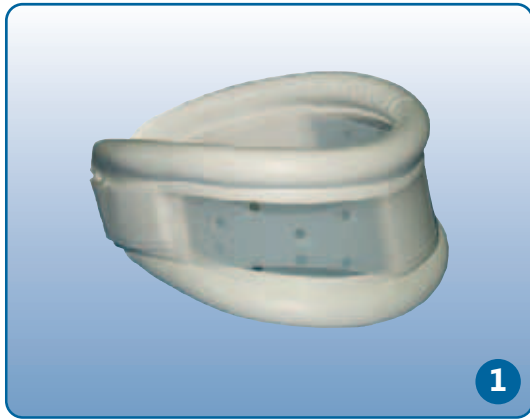
**INDICATIONS:** Neck pain syndromes. Degenerative diseases. Acute or chronic cervical syndromes. Postoperative.

**MEASUREMENT:** Neck circumference.

SIZES:	Circumference	Height
M/low	42-54 cm	8 cm
M/medium	42-54 cm	9 cm
M/high	42-54 cm	11 cm
L/low	47-59 cm	8 cm
L/medium	47-59 cm	9 cm
L/high	47-59 cm	11 cm



CERVICAL COLLARS



1

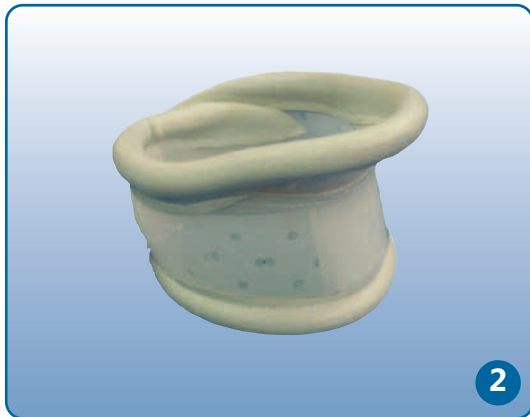
**1-ADJUSTABLE HEIGHT COLLAR C61**

Height adjustable. Made of 1.5 mm low density polyethylene and synthetic leather. Velcro closure.

**INDICATIONS:** Neck pain syndrome. Degenerative diseases. Acute or chronic cervical syndromes. Postoperative, for stabilization and support.

**MEASUREMENT:** Neck circumference, and in 2 heights (7 cm or 10 cm).

SIZES:	Circumference	Height
S	25-32 cm	7 cm
M	33-39 cm	7 cm
L	40-46 cm	7 cm
S	25-32 cm	10 cm
M	33-39 cm	10 cm
L	40-46 cm	10 cm



2

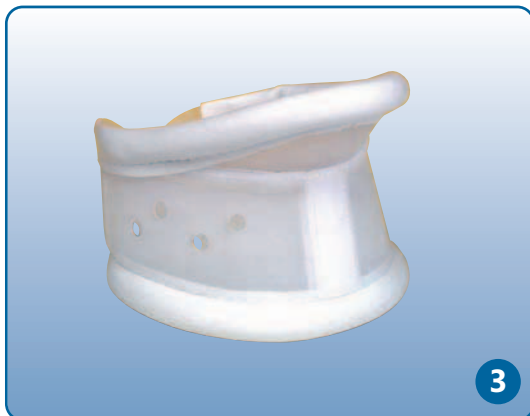
**2-ADJUSTABLE CERVICAL COLLAR WITH CHIN SUPPORT C58**

Cervical collar whose height can be adjusted by means of Velcro. Made of 1.5 mm low density polyethylene and synthetic leather. Chin support.

**INDICATIONS:** Neck pain syndrome. Degenerative diseases. Acute or chronic cervical syndromes. Postoperative, for stabilization and support.

**MEASUREMENT:** Neck circumference. Height can be regulated.

SIZES:	Circumference	Height
S	25-32 cm	9-10 cm
M	33-39 cm	9-10 cm
L	40-46 cm	9-10 cm



3

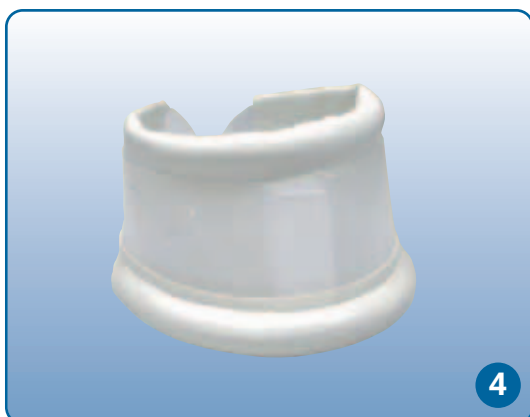
**3-ADJUSTABLE CERVICAL COLLAR WITH CHIN SUPPORT E120**

Cervical collar whose height can be adjusted using Velcro to give better fit. Made of 1 mm low density polyethylene and synthetic leather. Chin support.

**INDICATIONS:** Neck pain syndrome. Degenerative diseases. Acute or chronic cervical syndromes. Postoperative, for stabilization and support.

**MEASUREMENT:** Neck circumference.

SIZES:	Circumference	Height
XS	32-37 cm	7,5-9 cm
S	36-41 cm	8-9,5 cm
M	40-45 cm	8,5-10 cm
L	44-49 cm	9-10,5 cm
XL	48-53 cm	9-10,5 cm



4

**4-ADJUSTABLE CERVICAL COLLAR E41**

Semi-rigid cervical collar with chin support. Fully adjustable in height to provide desired neck flexion or extension positioning. Made of low density polyethylene of 1 mm and synthetic leather. Velcro closure.

**INDICATIONS:** Neck pain syndrome. Degenerative diseases. Acute or chronic cervical syndromes. Postoperative, for stabilization and support.

**MEASUREMENT:** Neck circumference.

SIZES:	Circumference	Height
XS	32-37 cm	7,5-9 cm
S	36-41 cm	8-9,5 cm
M	40-45 cm	8,5-10 cm
L	44-49 cm	9-10,5 cm
XL	48-53 cm	9-10,5 cm

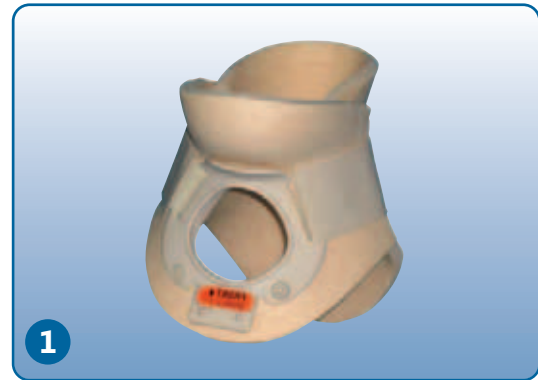
## 1-CONTOURED CERVICAL COLLAR 961

Made in polyethylene foam with tracheal opening. Perforated for ventilation. Thanks to its lateral closure system, it can be fitted without moving the patient. Radiolucent plastic rivets.

**INDICATIONS:** All process requiring an important neck immobilisation, cervical, tendinitis, osteoarthritis, contractural diathesis, ligament-muscle lesion, medical urgencies due to cervical traumatism and cervical post-surgery.

**MEASUREMENT:** Neck circumference.

SIZES:	Circumference	Height
S/Xlow	25,4-33 cm	5,46 cm
S/low	25,4-33 cm	8 cm
S/medium	25,4-33 cm	10,54 cm
S/high	25,4-33 cm	13,08 cm
M/Xlow	33-40,6 cm	5,46 cm
M/low	33-40,6 cm	8 cm
M/medium	33-40,6 cm	10,54 cm
M/high	33-40,6 cm	13,08 cm
L/Xlow	40,6-48,3 cm	5,46 cm
L/low	40,6-48,3 cm	8 cm
L/medium	40,6-48,3 cm	10,54 cm
M/high	40,6-48,3 cm	13,08 cm
XL/Xlow	+48,3 cm	5,46 cm
XL/low	+48,3 cm	8 cm
XL/medium	+48,3 cm	10,54 cm
XL/high	+48,3 cm	13,08 cm



## 2-ADJUSTABLE CERVICAL COLLAR WITH CHIN SUPPORT E 42P

Cervical collar whose height can be adjusted by means of metallic bands to give better fit. Made of 1.5 mm low density polyethylene and synthetic leather. Chin support.

**INDICATIONS:** Neck pain syndrome. Degenerative diseases. Acute or chronic cervical syndromes. Postoperative, for stabilization and support.

**MEASUREMENT:** Neck circumference.

SIZES:	Circumference	Height
S	35-39 cm	8-9 cm
M	39-43 cm	8,5-9,5 cm
L	43-47 cm	9-10 cm



## 3-TRACTION DOOR MODEL G-30

Sturdy antiskid plastic bracket fastens over any door. Friction-less nylon rope. Notched plastic spreader bar. Head halter adjustable by means of Velcro. Water weight bag calibrated up to 5 Kgs.

**INDICATIONS:** Rehabilitation of spinal deviations

**SIZES:** SINGLE

## 4-E45 - S.O.M.I. (STERNAL - OCCIPITAL - MANDIBULAR - IMMOBILIZER)

Cervical orthosis completely adjustable which provides flexion, neutral or hyperextension positioning and immobilisation. Mandibular and occipital supports are totally adjustable to provide prescribed positioning. Trapezius bars smoothly distribute support over the trapezius area. Aluminium easy shaped to comfortably fit individual patient contours. Mandible support is easily removed by patient for eating, showing, etc. Headband attachment easily snaps onto the occipital support for added security when the chin support is removed.

**INDICATIONS:** Cervialgias and cervicobrachialgia of compressive origin. Cervical traumatism.

**MEASUREMENT:** Patient height.

SIZES:	Patient Height
S	Up to 144cm
L	Over 144cm



# SHOULDER SUPPORT



## 1•BASIC SHOULDER SUPPORT 320

Simple shoulder support made of elastic cotton fabric. Used mainly for correction of posture throughout the day.

**INDICATIONS:** Reminder of bad posture.

**MEASUREMENT:** Waist circumference.

SIZES:	Circumference
XS	53-61 cm
S	58-67 cm
M	64-73 cm
L	69-79 cm
XL	74-85 cm
XXL	76-91 cm



## 2•CONFORT SHOULDER SUPPORT 330

Comfortable shoulder support made of breathable elastic cotton fabric, with straps passing over the shoulders and crossing at the back, joining at their front by Velcro closures to give a better fit.

**INDICATIONS:** Reminder of bad postures.

**MEASUREMENT:** Thorax circumference.

SIZES:	Circumference
XS	77-88 cm
S	82-94 cm
M	88-100 cm
L	93-106 cm
XL	98-111 cm



## 3•SHOULDER BRACE ORTHOPRIM LT 138

Comfortable under garments. The retropulsion of the shoulders manages to correct kyphotic bad posture. Elastic straps of reinforcement crossing the back and increasing the correction. Padded shoulders and axillas straps for the patient's bigger comfort.

**INDICATIONS:** Reminder of bad postures.

**MEASUREMENT:** Circumference under breast.

SIZES:	Circumference
XXS	50-60 cm
XS	60-70 cm
S	70-80 cm
M	80-90 cm
L	90-100 cm
XL	100-110 cm



## 4•ORTHO PRIM LC SHOULDER SUPPORT 431

Comfortable shoulder support, breathable, with band passes over the shoulders, crossed at the back, and fastened in front by means of Velcro for a better adjustment. Straps on the shoulder and axillas areas are padded for comfort.

**INDICATIONS:** Reminder of bad postures.

**MEASUREMENT:** Circumference under breast.

SIZES:	Circumference
XS	65-75 cm
S	75-85 cm
M	85-95 cm
L	95-105 cm
XL	105-115 cm



### 1-TAYLOR SPINAL ORTHOSIS 8171 AND 8166

Dorso-lumbar corset consisting of a lined metal structure, padded fabric and a textile back support whose width can be adjusted by means of lacing, open at the front. Alternating truss hook closure. Side lacing attaches garment front to posterior uprights and permits sitting adjustment. Model 8171 is for women, and model 8166 is for men. Latex free.

**INDICATIONS:** Indicated for disorders affecting the spine and requiring immobilization of flexoextension, rotation, and lateral inflexion in the middle and lower dorsal region of the spine, and the entire lumbar region of the spine.

**MEASUREMENT:** Hip circumference.

SIZES:	Hip
S	76-84 cm
M	84-93 cm
L	93-104 cm
XL	104-112 cm



### 2-ORTHO PRIM LC TAYLOR ORTHOSIS 637 AND 638

New Taylor brace made with dorsal bars adjustable in height and shoulder straps with variable length, providing to the Taylor brace an effective combination of flexibility, fitting all body shapes and its easy application for the orthopedic technician. Breathable material, more comfortable and better tolerated than the traditional Taylor corset. Machine washable. Model 638: A central lodging specially designed for abdomen pendulous avoids the made-to-measure and prolonged delivery terms. Material more comfortable and better tolerated than the traditional Taylor corset. Latex free.

**INDICATIONS:** Indicated for disorders affecting the spine and requiring immobilization of flexoextension, rotation, and lateral inflexion in the middle and lower dorsal region of the spine, and the entire lumbar region of the spine.

**MEASUREMENT:** Hip circumference.

SIZES:	Hip
S	80-95 cm
M	90-105 cm
L	100-115 cm
XL	110-125 cm
XXL	120-135 cm



### 3-TAYLOR DUO ORTHOSIS

Dorso-lumbar corset. Elastic frontal part adjustable in height, with Velcro closure. It keeps the traditional lacing, which along with the elasticity of the new fabric, assure a greater and easier fitting and comfort. Cinch straps with inner Velcro adhesive to the frontal part for easier handling by the patient. Remaining ends or straps can be cut accordingly to the patient's contour. Floating Velcros making easier its handling. Unisex.

**INDICATIONS:** Indicated for disorders affecting the spine and requiring immobilization of flexoextension, rotation, and lateral inflexion in the middle and lower dorsal region of the spine, and the entire lumbar region of the spine.

**MEASUREMENT:** Hip circumference.

SIZES:	Hip	Front Height
S	76-84cm	23-30 cm
M	84-93cm	23-30 cm
L	93-104cm	23-30 cm
XL	104-112cm	23-30 cm
XXL	112-130cm	23-30 cm



### 4-CMZ - RIGID DORSOLUMBAR ORTHOSIS

Dorsolumbar corset composed by an aluminium frame and an elastic back support with fixing internal cinch strap.

**INDICATIONS:** Kiphosis/scoliosis, metastasis vertebral, vertebral flattening, vertebral insufficiency, Fractures from D6 to L2, Osteoporosis, Arthritis.

**MEASUREMENT:** Trochanters circumference.

SIZES:	Hip
S	65-85cm
M	85-105cm
L	105-125cm





**1-KNIGHT CORSET 715**

A rigid low back orthosis with pelvic and thoracic bands joined to posterior and lateral uprights to provide excellent anterior, posterior and medial lateral stability. By increasing the pressure of the posterior uprights in the deep portion of the lumbar curve, this orthosis can provide mild hyperextension of the lumbar spine. Side lacing attaches garment front to lateral uprights and permits fitting adjustment. Latex free.

**INDICATIONS:** Indicated for disorders affecting the spine and requiring immobilization of flexoextension, rotation, and lateral inflexion in the middle and lower lumbar region of the spine.

**MEASUREMENT:** Hip circumference.

SIZES:	Hip
S	76-84 cm
M	84-93 cm
L	93-104 cm
XL	104-112 cm



**2-ORTHO PRIM LC KNIGHT ORTHOSIS 632 AND 634**

New Knight brace made with lumbar bars adjustable in height providing to the Knight brace an optimum flexibility for the patient. The permanent screws allows the assembly for the orthopedic technician. More comfortable and better tolerated material than the traditional Taylor corset. Machine washable. Model 634: A central lodging specially designed for abdomen pendulous avoids the made-to-measure and prolonged delivery terms. Latex free.

**INDICATIONS:** Indicated for disorders affecting the spine and requiring immobilization of flexoextension, rotation, and lateral inflexion in lumbar region of the spine.

**MEASUREMENT:** Hip circumference.

SIZES:	Hip
S	80-95 cm
M	90-105 cm
L	100-115 cm
XL	110-125 cm
XXL	120-135 cm



**3-KNIGHT DUO ORTHOSIS**

Sacrolumbar corset. Elastic frontal part adjustable in height, with Velcro closure. It keeps the traditional lacing, which along with the elasticity of the new fabric, assure a greater and easier fitting and comfort. Cinch straps with inner Velcro adhesive to the frontal part for easier handling by the patient. Remaining ends or straps can be cut accordingly to the patient's contour. Floating Velcros making easier its handling. Unisex.

**INDICATIONS:** Indicated for disorders affecting the spine and requiring immobilization of flexoextension, rotation, and lateral inflexion in lumbar region of the spine.

**MEASUREMENT:** Hip circumference.

SIZES:	Hip	Front Height
S	76-84cm	23-28 cm
M	84-93cm	23-28 cm
L	93-104cm	23-28 cm
XL	104-112cm	23-28 cm
XXL	112-130cm	23-28 cm

### 1-TORSO STRETCH 9400P

The Torso Stretch is a thoracolumbar orthosis of great comfort and easy fitting. The inner part is lined of foam. The bands that pass above the shoulders and axillas are padded with a profile of soft extruded rubber, for the patient's bigger comfort. These bands can be regulated to the patient's height by means of buckles. Lightweight and invisible under clothing. Simple design. The structure is easy to adjust to fit the body and comfortable. Easy to wash. The back part is easy to clean with a moistened cloth. The elastic waistband can be hand-washed in lukewarm water (30°).

**INDICATIONS:** Indicated for all the stages of osteoporosis, in cases of postural weakness of the spinal column and muscular weakness, spinal deformations in adolescents. Encourages proper posture.

**SIZES:** SINGLE



### TLSO

### 2-TWO-SHELLS PLASTIC CORSET TLSO

Thoraco-lumbar-sacro orthosis with exterior made of 4 mm polyethylene and interior lined with white polyethylene foam 5 mm thick. Thermo-molded materials to aid in patient fitting, easily altered. Velcro closures straps on nylon tape and hook Velcro for easy sizing adjustability. Clavicle support in lined aluminium. The clavicle support is attached to the front valve by means of an inserted plate in the polyethylene avoiding intermediate loose pieces and adaptation.

**INDICATIONS:** Pathologies requiring immobilization of the dorsal or lumbar zone, and pre- and postoperative processes of the spine.

**MEASUREMENT:** Breast, waist and hip perimeter. Available in models for women and men.

SIZES WOMEN:	Breast	Waist	Hip
XS	65-75 cm	55-65 cm	78-88 cm
S	68-78 cm	62-72 cm	85-95 cm
M	72-82 cm	69-79 cm	92-102 cm
L	80-90 cm	77-87 cm	99-109 cm
XL	89-99 cm	84-94 cm	106-116 cm

SIZES MEN:	Chest	Waist	Hip
XS	80-90 cm	70-80 cm	80-90 cm
S	85-95 cm	78-88 cm	87-97 cm
M	90-100 cm	86-96 cm	94-104 cm
L	95-105 cm	94-104 cm	101-111 cm
XL	100-110 cm	102-112 cm	109-119 cm



### 3-WILLIAMS BRACE

A lumbosacral orthosis with a metal frame composed by pelvic and thoracic bands, joined together by four vertical bands. The side bands articulate with flexibility over the pelvic band, providing comfort when sitting. It is all lined with a cover of padded fabric on the inside and is supported by means of a frontal textile band.

**INDICATIONS:** Indicated for disorders affecting the spine and requiring immobilization of flexoextension, rotation, and lateral inflexion in the middle and lower lumbar region of the spine.

**MEASUREMENT:** Hip circumference.

SIZES:	Hip
S	76-84 cm
M	84-93 cm
L	93-104 cm
XL	104-112 cm





## 1-HYPEREXTENSION BRACE WITH SUPPORT ON PUBIS C34

Rigid orthosis, designed in anodized duralumin, to maintain the spine in hyperextension, limiting the anteroposterior and lateral movements. Continuous adjustment of the sternal, lateral and pelvic plates (width, height and pelvis) for a better fitting. These plates are padded to provide greater comfort to the patient.

Tilted sternal plate for a better adjustment.

The sidebands are straight which improves the vertical adjustment and comfort.

All the screws include a plastic washer to provide more safety.

Improvements on closure and belt:

- Closing system of open ring and plastic structure.
- System of pulleys reducing efforts of the patient at closure.
- Anti-swivel device of the belt for an easier assembly and fitting.
- Closure spring to make it more secure.
- Rope on the plastic buckle of the strap to make easier its handling.

**INDICATIONS:** Vertebral compression fractures. Osteoporosis. Dislocations. Vertebral arthritis.

**MEASUREMENT:** Hip circumference.

SIZES:	Hip	Height
S	76-83 cm	43-47 cm
M	83-94 cm	45-50 cm
L	94-104 cm	48-54 cm
XL	104-114 cm	53-59 cm



## 2-JEWETT TYPE HYPEREXTENSION BRACE E44 AND E44S/P

Rigid orthosis, designed to maintain the spine in hyperextension. Padded sternal, pubic and lateral pads. Padded rear plate and adjustable belt.

Totally washable. Made of duralumin and finished with a polyamide plastic cover. Adjustable in height and in thorax and pelvis width.

Model E44SP without iliac crest rest.

Model E44 with adjustable iliac crest rest.

**INDICATIONS:** Vertebral compression fractures. Osteoporosis. Dislocations. Vertebral arthritis.

**MEASUREMENT:** Hip circumference.

SIZES:	Hip	Height
S	74-88 cm	41-48 cm
M	86-100 cm	46-53 cm
L	98-112 cm	51-58 cm



## 3-ORTHO PRIM STAR HYPEREXTENSION BRACE

Rigid orthosis designed to maintain the spine in hyperextension. It can replace immobilization in plaster.

Padded sternal and pubic pads. Padded side straps. Padded rear plate. Plastic belt that regulates the tension by means of slides and an ingenious tension strap. Totally washable.

Extremely lightweight and easy to adjust. The three pressure point system provides stability between the thoracic and lumbar regions of the spine. Double adjustability with safety locks. Pectoral pad on adjustable floating support.

Circumference adjustment by trimming the plastic belt. System for adjusting the height without needing to disassemble the frame as the drill holes have a thread, which makes adjustment easier. The lumbar plate can adjust to 3 different heights. There is a limit blocking belt adjustment to ensure a constant distance, allowing sideways movement. Protectors at the ends of the belt.

**INDICATIONS:** Vertebral fractures. Osteoporosis. Dislocations. Vertebral arthritis. Compression fractures.

**MEASUREMENT:** Height adjustable by 17 cm (from 40 cm to 57 cm).

**SIZES:** SINGLE

### 1•HYPEREXTENSION BRACE WITH ADJUSTABLE PELVIC BAND C37

Rigid orthosis, designed in anodized duralumin, to maintain the spine in hyperextension, limiting the anteroposterior and lateral movements. Continuous adjustment of sternal, lateral and pelvic plates (width, height and pelvic), for a better fitting. These plates are padded to provide greater comfort to the patient.

Tilted sternal plate for a better adjustment.

Straighter sidebands improving its adjustment and comfort.

The inclination of the pelvic band is adjustable, fitting all different patient perimeters.

All the screws have plastic washer to provide more safety.

Improvements on closure and belt:

- Closing system of open ring and plastic structure.
- System of pulleys reducing efforts of the patient at closure.
- Anti-swivel device of the belt for an easier assembly and fitting.
- Closure spring to make it more secure.
- Rope on the plastic buckle of the strap to make easier its handling by the patient.

**INDICATIONS:** Vertebral compression fractures. Osteoporosis. Dislocations. Vertebral arthritis.

**MEASUREMENT:** Hip circumference.

SIZES:	Hip	Height
S	76-94 cm	43-50 cm
L	94-114 cm	48-59 cm



### 2•HYDROTHERAPY HYPEREXTENSION BRACE WITH ADJUSTABLE PELVIC BAND C38

Rigid orthosis, designed in anodized duralumin, to maintain the spine in hyperextension, limiting the anteroposterior and lateral movements.

Made in anodized duralumin and stainless material allowing a hydrotherapeutic rehabilitation.

Continuous adjustment of the sternal, lateral and pelvic plates (width, height and pelvic) for a better fitting. These plates are padded with foam of closed cell to avoid water absorption.

Tilted sternal plate for a better adjustment.

The lateral bands are straight and with continuous adjustment, improving the vertical adjustment.

High safety closure system avoiding its unintentional opening.

The pelvic band is adjustable to fit all patient's perimeters.

All the screws include plastic washer for higher safety.

**INDICATIONS:** Vertebral compression fractures. Osteoporosis. Dislocations. Vertebral arthritis.

**MEASUREMENT:** Hip circumference.

SIZES:	Hip	Height
S	76-94 cm	43-50 cm
L	94-114 cm	48-59 cm



# HYPEREXTENSION ORTHOSIS



## 1-HYPEREXTENSION BRACE WITH PELVIC BAND C35

Rigid orthosis, designed in anodized duralumin, to maintain the spine in hyperextension, limiting the anteroposterior and lateral movements. Continuous adjustment of the lateral and sternal plates (width and height), for a better fitting. These plates are padded to provide greater comfort to the patient.

Tilted sternal plate for a better adjustment.

Straighter sidebands improving its adjustment and comfort.

All the screws include a plastic washer to provide more safety.

Improvements on closure and belt:

- Closing system of open ring and plastic structure.
- System of pulleys reducing efforts of the patient at closure.
- Anti-swivel device of the belt for an easier assembly and fitting.
- Closure spring to make it more secure.
- Rope on the plastic buckle of the strap to make easier its handling by the patient.

**INDICATIONS:** Vertebral compression fractures. Osteoporosis. Dislocations. Vertebral arthritis.

**MEASUREMENT:** Hip circumference.

SIZES:	Hip	Height
S	76-83 cm	43-47 cm
M	83-94 cm	45-50 cm
L	94-104 cm	48-54 cm
XL	104-114 cm	53-59 cm

C35 short version

SIZES:	Hip	Height
M/C	83-94 cm	43-47 cm
L/C	94-104 cm	45-50 cm
XL/C	104-114 cm	48-54 cm



## 2-HYPEREXTENSION BRACE WITH ADJUSTABLE STERNAL PLATE AND TILTED OR ADJUSTABLE PELVIC BAND C35PLUS BASIC AND C35PLUS

Rigid orthosis, designed in anodized duralumin, to maintain the spine in hyperextension, limiting the anteroposterior and lateral movements. Continuous adjustment of the lateral and sternal plates (width and height) for a better fitting. It allows an adjustment of 6° to 6° of the inclination of the sternal support. These plates are padded to provide a greater comfort to the patient.

The sternal plate is tilted for a better adjustment.

Straighter sidebands improving its adjustment and comfort.

The pelvic band can be left fixed or tilted to fit the different patient's movements.

All the screws have plastic washer to provide more safety.

Closure and belt:

- Closing system of open ring and plastic structure.
- System of pulleys reducing efforts of the patient at closure.
- Anti-swivel device of the belt for an easier assembly and fitting.
- Closure spring to make it more secure.
- Rope on the plastic buckle of the strap to make easier its handling by the patient.

**INDICATIONS:** Vertebral fractures. Osteoporosis. Dislocations. Vertebral arthritis. Compression fractures.

**MEASUREMENT:** Hip circumference.

C35PLUS			C35PLUS BASIC	
SIZES:	Hip	Height	Hip	Height
S	74-86 cm	39-48 cm	74-86 cm	37-41 cm
M	84-98 cm	42-51 cm	84-94 cm	41-47 cm
L	96-110 cm	45-52 cm	90-112 cm	44-50 cm
XL	106-120 cm	48-57 cm	102-112 cm	47-54 cm

C35Plus short version

SIZES:	Hip	Height	Hip	Height
M/C	84-98 cm	38-43 cm	84-98 cm	37-41 cm
L/C	96-110 cm	42-51 cm	96-110 cm	41-48 cm
XL/C	106-120 cm	45-54 cm	106-120 cm	43-49 cm

ORTHOPRIM LC back supports are made of a new fabric consisting of cotton fibres commingled with an elastic polymer fibre that ensures a better fit to different body shapes, and provides the firmness and support needed. The ORTHOPRIM LC semi-rigid back support ensures high breathability for the patient. They are discrete, and in a colour that enhances its modern image. Machine washable. Few different sizes and adjustable for men and women. Central Velcro closures. Loop binding side lacings easy to fit to all contours. The eyeleted non-stretched nylon cinch straps allow the patient to easily adjust the degree of support applied to the spine. Indications: In traumatism or degenerative processes of the lumbosacral area which needs moderate support and local heat.

SIZES:	Model of Orthoprim LC Semi-Rigid Back Support							
	437	437T	438	432	433	434	435T	430A
XS	70 - 85 cm	70 - 85 cm	--	--	--	--	--	--
S	80 - 95 cm	80 - 95 cm	80 - 95 cm	80 - 95 cm	80 - 95 cm	80 - 95 cm	80 - 95 cm	80 - 95 cm
M	90 - 105 cm	90 - 105 cm	90 - 105 cm	90 - 105 cm	90 - 105 cm	90 - 105 cm	90 - 105 cm	90 - 105 cm
L	100 - 115 cm	100 - 115 cm	100 - 115 cm	100 - 115 cm	100 - 115 cm	100 - 115 cm	100 - 115 cm	100 - 115 cm
XL	110 - 125 cm	110 - 125 cm	110 - 125 cm	110 - 125 cm	110 - 125 cm	110 - 125 cm	110 - 125 cm	110 - 125 cm
XXL	120 - 135 cm	120 - 135 cm	120 - 135 cm	120 - 135 cm	120 - 135 cm	120 - 135 cm	120 - 135 cm	120 - 135 cm

### 1-ORTHOPRIM LC DORSOLUMBAR BACK SUPPORT, MODEL 437

Dorsolumbar back support indicated for patients with lesions at this level. Elastic shoulder straps pull back the shoulders and remind the patient of good posture positioning and act to correct kyphotic postures. Supplied with 2 plasticized spring steel stays, for use if necessary. Latex free.

**HEIGHT:** Front 21 cm, back 51 cm.

**MEASUREMENT:** Hip circumference in cm.



### 2-ORTHOPRIM LC DORSOLUMBAR BACK SUPPORT WITH 4 STAYS, MODEL 437 T

Dorsolumbar back support indicated for patients with lesions at this level.

Provides greater support than model 437, as it has two more lateral inserts. Supplied with 4 plasticized spring steel stays, for use if necessary. Latex free.

**HEIGHT:** Front 21 cm, back 51 cm.

**MEASUREMENT:** Hip circumference in cm.



### 3-ORTHOPRIM LC DORSOLUMBAR BACK SUPPORT FOR ABDOMEN PENDULOUS, MODEL 438

Dorsolumbar back support indicated for patients with lesions at this level.

Side closure, designed to hold the abdomen in its normal position. Specially for obese patients. Supplied with plasticized spring steel stays, for use if necessary. Latex free.

**HEIGHT:** Front 21 cm, back 51 cm.

**MEASUREMENT:** Hip circumference in cm, with the patient lying flat.





### 1-ORTHOPRIM LC LOW SACROLUMBAR BACK SUPPORT, MODEL 432

Sacrolumbar back support with front closure, designed to fit the short torso or when the prescription specifies a narrower back support because of the injuries location. Supplied with 2 plasticized spring steel stays for use if necessary. Latex free.

**HEIGHT:** Front 20 cm, back 27 cm.

**MEASUREMENT:** Hip circumference in cm.



### 2-ORTHOPRIM LC HIGH SACROLUMBAR BACK SUPPORT, MODEL 433

Sacrolumbar back support with front closure, designed to fit the high torso or when the prescription specifies a higher back support because of the location of the injuries. Supplied with 2 plasticized spring steel stays, for use if necessary. Latex free.

**HEIGHT:** Front 25 cm, back 32 cm.

**MEASUREMENT:** Hip circumference in cm.



### 3-ORTHOPRIM LC SACROLUMBAR BACK SUPPORT FOR PENDULOUS ABDOMEN, MODEL 434

Sacrolumbar back support with side closure designed to hold the abdomen in its normal position. Specially designed for obese people. Supplied with 2 plasticized spring steel stays, for use if necessary. Latex free.

**HEIGHT:** Front 31 cm, back 32 cm.

**MEASUREMENT:** Hip circumference in cm with the patient lying flat.



### 4-ORTHOPRIM LC SACROLUMBAR BACK SUPPORT WITH 4 STAYS, MODEL 435 T

Sacrolumbar back support with front closure designed for high torso people, providing greater support than model 433 due to the 2 additional stays, and because it is slightly higher at the rear. Supplied with 4 plasticized spring steel stays, for use if necessary. Latex free.

**HEIGHT:** Front 25 cm, back 35 cm.

**MEASUREMENT:** Hip circumference in cm.



### 5-ORTHOPRIM LC BACK SUPPORT WITH THERMO-MOLD PAD, MODEL 430A

Lumbosacral back support with back pad made of thermo-moulded plastic at low temperature by means of air gun or water bath (85°). Latex free.

Posterior pocket for insertion of the pad 430R.

Provided with two plasticized spring steel stays to be used if needed.

Attractive champagne colour.

**HEIGHT:** Front: 20 cm - back: 27,5 cm.

**MEASUREMENT:** Hip circumference in cm.



Semi-rigid back supports. 5 sizes available to obtain the best fitting. 3 models available in 2 colours. 4 steel stays. Breathable fabric- washable.

SIZES:	Model of Gold Back Support					
	232	233	234	235	237	238
S	85 - 95 cm	85 - 95 cm	85 - 95 cm	85 - 95 cm	85 - 95 cm	85 - 95 cm
M	95 - 105 cm	95 - 105 cm	95 - 105 cm	95 - 105 cm	95 - 105 cm	95 - 105 cm
L	105 - 115 cm	105 - 115 cm	105 - 115 cm	105 - 115 cm	105 - 115 cm	105 - 115 cm
XL	115 - 125 cm	115 - 125 cm	115 - 125 cm	115 - 125 cm	115 - 125 cm	115 - 125 cm
XXL	125 - 135 cm	125 - 135 cm	125 - 135 cm	125 - 135 cm	125 - 135 cm	125 - 135 cm

### 1-GOLD BACK SUPPORT 237

Dorsolumbar semi-rigid back support.

**MATERIAL:** Three-layers breathable fabric fitting all body shapes (men and women).

**BACK REINFORCEMENTS:** 2 plasticized spring steel stays, 2 malleable plastic stays.

**FRONT REINFORCEMENTS:** 2 spiral stays, 2 plastic stays, 2 lateral straps with 2 tighteners each, 2 shoulder straps with 1 tightener each.

**HEIGHT:** Front 22,5 cm, back 51 cm.

**MEASUREMENT:** Hip circumference.



### 2-GOLD BACK SUPPORT 238

Dorsolumbar semi-rigid back support.

**MATERIAL:** Three-layers breathable fabric fitting all body shapes (men and women).

**BACK REINFORCEMENTS:** 4 plasticized spring steel stays, 2 malleable plastic stays.

**FRONT REINFORCEMENTS:** 2 spiral stays, 2 plastic stays, 2 lateral straps with 3 tighteners each, 2 shoulder straps with 1 tightener each.

**HEIGHT:** Front 22,5 cm, back 51 cm.

**MEASUREMENT:** Hip circumference.



### 3-GOLD BACK SUPPORT 232

Sacrolumbar semi-rigid back support.

**MATERIAL:** Three-layers breathable fabric fitting all body shapes (men and women).

**BACK REINFORCEMENTS:** plasticized spring steel stays, 2 malleable plastic stays.

**FRONT REINFORCEMENTS:** 2 spiral stays, 2 plastic stays, 2 lateral straps with 2 tighteners each.

**HEIGHT:** Front 19 cm, back 28,5 cm.

**MEASUREMENT:** Hip circumference.



## GOLD BACK SEMI-RIGID



### 1•GOLD BACK SUPPORT 233

Sacrolumbar semi-rigid back support.

**MATERIAL:** Three-layers breathable fabric fitting all body shapes (men and women).

**BACK REINFORCEMENTS:** plasticized spring steel stays, 2 malleable plastic stays.

**FRONT REINFORCEMENTS:** 2 spiral stays, 2 plastic stays, 2 lateral straps (one each side) with 3 tighteners each.

**HEIGHT:** Front 24 cm, back 33,5 cm.

**MEASUREMENT:** Hip circumference.



### 2•GOLD BACK SUPPORT 234

Sacrolumbar semi-rigid back support for abdomen pendulous.

**MATERIAL:** Three-layers breathable fabric fitting all body shapes (men and women).

**BACK REINFORCEMENTS:** 2 spring steel stays, 2 malleable plastic stays.

**FRONT REINFORCEMENTS:** 3 spiral stays, 2 plastic stays, 2 lateral straps with 2 tighteners each.

**HEIGHT:** Front 26,5 cm, back 28 cm.

**MEASUREMENT:** Hip circumference.



### 3•GOLD BACK SUPPORT 235

Sacrolumbar semi-rigid back support.

**MATERIAL:** Three-layers breathable fabric fitting all body shapes (men and women).

**BACK REINFORCEMENTS:** 4 plasticized spring steel stays, 2 malleable plastic stays.

**FRONT REINFORCEMENTS:** 2 spiral stays, 2 plastic stays, 4 lateral straps with 2 tighteners each.

**HEIGHT:** Front 25 cm, back 35 cm.

**MEASUREMENT:** Hip circumference.

Semi-rigid back supports. 6 sizes available to obtain the best fitting. 3 models available in 2 colours. 4 steel stays. Breathable fabric- washable.

SIZES:	Model of Olympia Semi-Rigid Back Support					
	110	111	112	210	211	212
XS	75 - 82 cm	75 - 82 cm	75 - 82 cm	75 - 82 cm	75 - 82 cm	75 - 82 cm
S	82 - 90 cm	82 - 90 cm	82 - 90 cm	82 - 90 cm	82 - 90 cm	82 - 90 cm
M	90 - 100 cm	90 - 100 cm	90 - 100 cm	90 - 100 cm	90 - 100 cm	90 - 100 cm
L	100 - 110 cm	100 - 110 cm	100 - 110 cm	100 - 110 cm	100 - 110 cm	100 - 110 cm
XL	110 - 120 cm	110 - 120 cm	110 - 120 cm	110 - 120 cm	110 - 120 cm	110 - 120 cm
XXL	120 - 130 cm	120 - 130 cm	120 - 130 cm	120 - 130 cm	120 - 130 cm	120 - 130 cm

### 1-OLYMPIA SEMI-RIGID BACK SUPPORT LUMBOSACRAL MODEL 110/210

Semi-rigid back support. Available in 2 colours (110 Orange / 210 Blue). 4 steel stays. Breathable fabric- washable.

**HEIGHT:** Front 18,5 cm, back 26 cm.

**MEASUREMENT:** Hip circumference.



### 2-OLYMPIA SEMI-RIGID BACK SUPPORT REINFORCED LUMBOSACRAL MODEL 111/211

Semi-rigid back support. Available in 2 colours (111 Orange / 211 Blue). 4 steel stays. Breathable fabric- washable.

**HEIGHT:** Front 18,5 cm, back 26 cm.

**MEASUREMENT:** Hip circumference.



### 3-OLYMPIA SEMI-RIGID BACK SUPPORT LUMBOSACRAL HIGH MODEL 112/212

Semi-rigid back support. Available in 2 colours (112 Orange / 212 Blue). 4 steel stays. Breathable fabric- washable.

**HEIGHT:** Front 20-28 cm, back 32 cm.

**MEASUREMENT:** Hip circumference.



## TENSOELASTIC

High contention elastic back supports. These models have a rear lumbar support structure. The closure is comfortable, and easy to put on and take off. The tension can be varied and is adjusted by means of elastic bands with adjustable fixation. Totally washable. Optional thermoplastic pad that is introduced into a protective little bag which when directly fitted to the patient's shape alleviates pain through its evenly applied external pressures.



### 1-ORTHOPRIM SACROLUMBAR TENSOELASTIC BACK SUPPORT FOR PENDULOUS ABDOMEN, MODEL 5395

Padded posterior pad made of polyethylene. Side closure. Designed to hold the abdomen in its normal position. Specially for obese patients.

**HEIGHT:** Front 30 cm, back 25 cm.

**MEASUREMENT:** Hip circumference in cm with the patient lying flat.

**SIZES:** 91, 96, 101, 106, 111, 116



### 1-BACK SUPPORT 543 FOR MEN AND 544 FOR WOMEN

Dorsolumbar tensoelastic back support

**INDICATIONS:** Acute and chronic lumbar pain. Disc hernia. Fracture of the transversal apophysis.

**HEIGHT:** model 543 for men: front 28 cm; back 34 cm  
Model 544 for women: front 28 cm; back 36 cm

**MEASUREMENT:** Hip circumference

<b>SIZES:</b>	XS	75-85 cm
	S	86-90 cm
	M	91-100 cm
	L	101-110 cm
	XL	111-120 cm

Adjustable elastic back supports for men and women. Made of an elastic three-layer breathable material that fits perfectly to the patient's circumference. ORTHOPRIM LT is the best orthopaedic solution for men and women who require moderate dorsolumbar or sacrolumbar support. The exclusive breathable ORTHOPRIM LT material is highly elastic and strong, lightweight and comfortable. It consists of a pleasant inner layer of cotton and an outer polyester layer that resists dirt and use. It is easy to use and wash. Release loop and end tab make unfastening easy, even for those with a weak grip. Contemporary colour that makes the product very discrete under clothing. All the models are supplied with plasticized spring steel stays to adjust to the patient's dorsolumbar curves.

SIZES:	Model of Orthoprime LT Back Support				
	137	131	132	133	134
S	85 - 95 cm	85 - 95 cm	85 - 95 cm	85 - 95 cm	----
M	95 - 105 cm	95 - 105 cm	95 - 105 cm	95 - 105 cm	95 - 105 cm
L	105 - 115 cm	105 - 115 cm	105 - 115 cm	105 - 115 cm	105 - 115 cm
XL	115 - 125 cm	115 - 125 cm	115 - 125 cm	115 - 125 cm	115 - 125 cm
XXL	----	----	----	----	125 - 135 cm
XXXL					

**1•ORTHOPRIM LT DORSOLUMBAR BACK SUPPORT, MODEL 137**

Lightweight, functional and resistant back support. Adjustable shoulder straps are padded for comfort. An innovative solution for patients needing dorsolumbar support. Latex free.

**HEIGHT:** Front 23 cm, back 56 cm.

**MEASUREMENT:** Hip circumference in cm.



**2•ORTHOPRIM LT LOW SACROLUMBAR BACK SUPPORT, MODEL 131**

Specially for sacroiliac pathologies. High contention because of the tension straps and spring steel stays. Latex free.

**HEIGHT:** Front 15 cm and back 19 cm.

**MEASUREMENT:** Hip circumference in cm.



**3•ORTHOPRIM LT MIDDLE SACROLUMBAR BACK SUPPORT, MODEL 132**

Specially for sacrolumbar pathologies. High contention because of the tension straps and spring steels. Support indicated for contention of the muscles and ligaments at the sacrolumbar level. Latex free.

**HEIGHT:** Front 19 cm and back 28 cm.

**MEASUREMENT:** Hip circumference in cm.



**4•ORTHOPRIM LT HIGH SACROLUMBAR BACK SUPPORT, MODEL 133**

Specially for sacrolumbar pathologies. High contention because of the tension straps and spring steel stays. Latex free.

**HEIGHT:** Front 23 cm and back 33 cm.

**MEASUREMENT:** Hip circumference in cm.



**5•ORTHOPRIM LT SACROLUMBAR BACK SUPPORT FOR PENDULOUS ABDOMEN, MODEL 134**

Specially for people with pendulous abdomen and with obese figure. Designed to hold the abdomen in its normal position. Latex free.

**HEIGHT:** Front 26 cm and back 28 cm.

**MEASUREMENT:** Hip circumference in cm, taken with the patient lying flat.



## VALDOS

Elastic breathable back support with an innovative design to easily fit women and men.

Indications: In traumatism or degenerative processes of the lumbosacral region that require moderate grip and local heat.

SIZES:	Model of Valdost Back Support			
	550	552	557	558
XS	72 - 80 cm	72 - 80 cm	----	----
S	81 - 91 cm	81 - 91 cm	81 - 90 cm	81 - 90 cm
M	92 - 103 cm	92 - 103 cm	91 - 100 cm	91 - 100 cm
L	104 - 116 cm	104 - 116 cm	101 - 109 cm	101 - 109 cm
XL	117 - 130 cm	117 - 130 cm	110 - 125 cm	110 - 125 cm

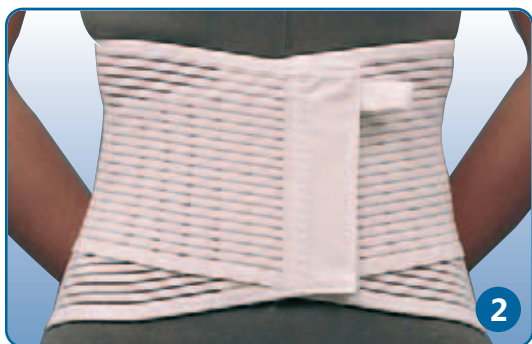


### 1-VALDOS BREATHABLE SACROLUMBAR BACK SUPPORT WITH PLASTICIZED STEEL STAYS, MODEL 550

Breathable elastic fabric fitting the patient's circumference. Elastic bands crossing at the back. Four pre-shaped plasticized steel stays. Steels lodging in synthetic leather. Lace for easy unfastening. Velcro closures. Front bones that prevent folding and allow flexion. Colour white or beige. Lumbar pads fixed by means of Velcro.

**HEIGHT:** Front 16 cm and back 27 cm.

**MEASUREMENT:** Hip circumference in cm.



### 2-VALDOS BREATHABLE CONFORT BACK SUPPORT WITH STAYS, MODEL 552

Made of breathable elastic material. Self-adhesive Velcro-type closure. Posterior plastic stays. Front stay in the closure. Lace for easy unfastening. Lightweight and comfortable. White or beige colours.

**HEIGHT:** Front 16 cm and back 27 cm.

**MEASUREMENT:** Hip circumference in cm.



### 3-VALDOS BACK SUPPORT 557

Lumbosacral back support with central closure allowing greater regulation than model 551.

**HEIGHT:** Front 17 cm and back 26 cm.

**MEASUREMENT:** Hip circumference in cm.



### 4-VALDOS HIGH BREATHABLE CONFORT BACK SUPPORT, MODEL 558

Breathable elastic sacrolumbar back support, with the possibility of adding lumbar pads of mouldable plastic at low temperature, in polyethylene or neoprene. The lumbar support pads are placed in the lodging of the Valdost Support. White or beige colours.

**HEIGHT:** Front 17 cm and back 26,5 cm.

**MEASUREMENT:** Hip circumference in cm.

## SIZES:

## Model of Elastic Back Support

	Neoback	Orthoprimback	Iperback
S	81 - 90 cm	81 - 90 cm	81 - 90 cm
M	91 - 100 cm	91 - 100 cm	91 - 100 cm
L	101 - 110 cm	101 - 110 cm	101 - 110 cm
XL	111 - 120 cm	111 - 120 cm	111 - 120 cm

**1-SACROLUMBAR BACK SUPPORT, MODEL NEO-BACK**

Front part made of elastic fabric. Rear part made of 3mm neoprene. Selfadhesive closure type Velcro. Elastic crossed support in the lumbar area. Reinforcement of plastic stays in lateral area. Champagne colour, discrete under garments.

**HEIGHT:** Front 15 cm, back 25 cm.

**MEASUREMENT:** Hip circumference in cm.

**2-SACROLUMBAR BACK SUPPORT, MODEL ORTHOPRIM-BACK**

Designed with elastic fabric with additional crossed support on the lumbar area. Selfadhesive closure. Reinforcement with plastic stays on the rear part. Champagne colour, discreet under garments.

**HEIGHT:** Front 15 cm, back 25 cm.

**MEASUREMENT:** Hip circumference in cm.

**3-SACROLUMBAR BACK SUPPORT, MODEL IPERBACK**

Made with elastic fabric with additional crossed support on the lumbar area. Selfadhesive closure. 4 plastic stays for reinforcement on the rear part. Champagne colour, discreet under garments.

**HEIGHT:** Front 15 cm, back 25 cm.

**MEASUREMENT:** Hip circumference in cm.



## TRADITIONAL ELASTIC

Made of cotton and elastic fabric, with Velcro closure. They provide a comfortable and easy fit to the patient's body. Indicated for fractures, traumatism, costal bruising, sprains, spasms and muscular hypotonia.

### SIZES:

### Model of Traditional Elastic Costal and Sacrolumbar Back Support

	310	311	523, 523S, 524
XS	65 - 71 cm	65 - 72 cm	-----
S	70 - 76 cm	71 - 78 cm	81 - 90 cm
M	75 - 82 cm	77 - 86 cm	91 - 100 cm
L	81 - 86 cm	85 - 95 cm	101 - 109 cm
XL	87 - 96 cm	94 - 105 cm	110 - 119 cm
XXL	-----	-----	120 - 129 cm



### 1-WHITE COSTAL SUPPORT FOR WOMEN, MODEL 310

Cut to shape for effective contention without irritating the female breast. White colour.

**HEIGHT:** Front 10 cm and back 21 cm.

**MEASUREMENT:** The circumference just below the breast in cm.



### 2-WHITE COSTAL SUPPORT FOR MEN, MODEL 311

Straight cut for effective contention of the male thorax. Abundant Velcro for adjustment to prevent displacement.

**HEIGHT:** Front 11 cm and back 16 cm.

**MEASUREMENT:** The circumference just below the breast in cm.



**1•ELASTIC BACK SUPPORT, MODEL 523**

The 523 elastic back support has been developed for all the non-specific pains of the lumbosacral region. Exclusive elastic fabric, with crossed elastic belts at the back, four bones to prevent wrinkles, optional semi-rigid steel inserts.

**HEIGHT:** Front 15 cm and back 26 cm.

**MEASUREMENT:** Hip circumference in cm.



**2•ELASTIC BACK SUPPORT, 523 FOR WOMEN**

The 523 elastic back support for women has been developed for non-specific lower back pain. Exclusive elastic fabric, with crossed elastic belts at the back, four bones to prevent wrinkles, optional semi-rigid steel inserts. Marked differences in height between men and women - the support for women is higher at the front and its lines are adapted to the female shape.

**HEIGHT:** Front 16 cm and back 30 cm.

**MEASUREMENT:** Hip circumference in cm.



**3•ELASTIC BACK SUPPORT, 524**

Elastic sacrolumbar back support with material resistant to machine washing, and a discrete colour that gives a modern effect.

**HEIGHT:** Front 15 cm and back 25 cm.

**MEASUREMENT:** Hip circumference in cm.



## INDUSTRIAL BACK SUPPORTS

SIZES:

### Model of Industrial Back Support

	820	821	826	827	23550P
S	85 - 95 cm	85 - 95 cm	85 - 95 cm	85 - 95 cm	85 - 95 cm
M	95 - 105 cm	95 - 105 cm	95 - 105 cm	95 - 105 cm	95 - 105 cm
L	105 - 115 cm	105 - 115 cm	105 - 115 cm	105 - 115 cm	105 - 115 cm
XL	115 - 120 cm	115 - 120 cm	115 - 120 cm	115 - 120 cm	115 - 120 cm
XXL	-----	-----	-----	120 - 135 cm	-----
XXXL	-----	-----	-----	135 - 150 cm	-----

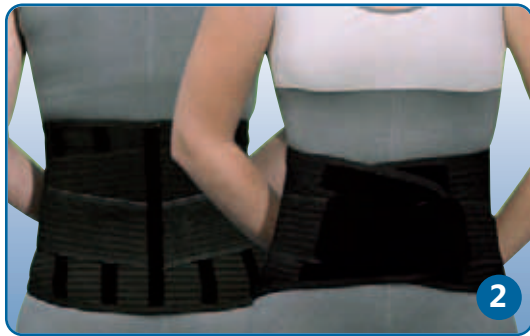


### 1-FLEXOLUMBEX INDUSTRIAL BACK SUPPORT, MODEL 820

Black back support with frontal Velcro closure and tapes with safety closure buckles. Made of elastic materials. Crossed lumbar bands. Reinforcing stays. Without straps. Optional suspenders.

**HEIGHT:** Height of back support: front 15 cm and back 25 cm.

**MEASUREMENT:** Hip circumference in cm.



### 2-FLEXOLUMBEX INDUSTRIAL BACK SUPPORT, MODEL 821

Black back support with frontal Velcro closure. Strong elastic tension strap. Made of Lycra. Reinforcing bones. Whit straps. Optional suspenders.

**HEIGHT:** Height of back support: front 13 cm and back 22 cm.

**MEASUREMENT:** Hip circumference in cm.



### 3-FLEXOLUMBEX INDUSTRIAL BACK SUPPORT, MODEL 826

Black back support with frontal Velcro closure and tapes with safety closure buckles. Made of elastic materials. Crossed lumbar bands. Reinforcing stays. Internal antislip straps. Optional suspenders.

**HEIGHT:** Height of back support: front 15 cm and back 25 cm.

**MEASUREMENT:** Hip circumference in cm.



### 4-FLEXOLUMBEX INDUSTRIAL BACK SUPPORT, MODEL 827

Black back support with frontal Velcro closure. Strong elastic tension strap. Made of Lycra. Reinforcing bones. Internal antislip straps. Optional suspenders.

**HEIGHT:** Height of back support: front 13 cm and back 22 cm.

**MEASUREMENT:** Hip circumference in cm.



### 5-INDUSTRIAL BACK SUPPORT, MODEL 23550P

Navy blue back support made of breathable elastic Support similar to 523, 826 and 827. Dark colour to wear over clothing. Without suspenders. Latex free.

**HEIGHT:** Height of back support: front 17 cm and back 22 cm.

**MEASUREMENT:** Hip circumference in cm.

SIZES:	Model of Neoprene and Three-Layer Back Support		
	N532	N542	TL05
XS	65 - 80 cm	65 - 80 cm	-----
S	80 - 90 cm	80 - 90 cm	80 - 90 cm
M	90 - 100 cm	90 - 100 cm	90 - 100 cm
L	100 - 110 cm	100 - 110 cm	100 - 110 cm
XL	110 - 120 cm	110 - 120 cm	110 - 120 cm

**1-NEOPRIM NEOPRENE BACK SUPPORT, MODEL N532**

Adjustable by Velcro. Provides support and compression on low back injuries. Indicated for traumatism or degenerative processes of the lumbosacral region that require moderate support and local warm.

**HEIGHT:** Front 12 cm and back 26 cm.

**MEASUREMENT:** Waist circumference in cm.



**2-NEOPRIM LUMBOPRES NEOPRENE BACK SUPPORT, MODEL N542**

Contention back support, made of 5 mm neoprene covered with nylon. Closed at the front with a wide band of velcro. Indicated for traumatism or degenerative processes of the lumbosacral region that require moderate support and local warm. Side straps, also of neoprene, provide an adjustable tension and press against the spine at the rear of the back support. The rear of the back support contains an inner pouch into which is introduced a thermoplastic plate that can be moulded at low temperature and has previously been fitted to the patient's back shape.

**HEIGHT:** Front 13 cm and back 23 cm.

**MEASUREMENT:** Waist circumference in cm.

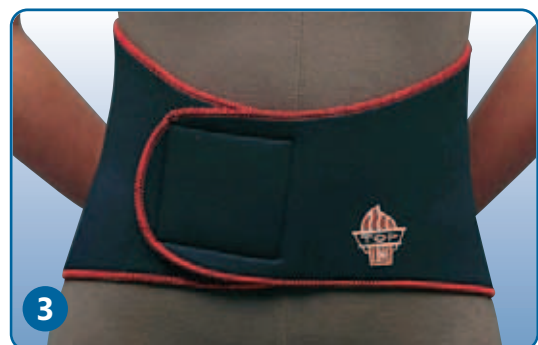


**3-TOP LINE NEOPRENE BACK SUPPORT, MODEL TL05**

Adjustable by means of Velcro. Provides support and compression for lower back injuries. Indicated in traumatism or degenerative processes of the lumbosacral region that require moderate support and local warm.

**HEIGHT:** Front 12 cm and back 27 cm.

**MEASUREMENT:** Waist circumference in cm.



## ARMSLINGS

**1-ARMSLING C12**

Comfortable shoulder arm sling, in tubular cotton with adjustable strap by means of slides with 2 clasps for the forearm and wrist. Rest ring for thumb. Beige colour. Latex free.

**INDICATIONS:** Pathologies requiring forearm support.

**SIZES:** Single size (fits both sides).

**2-NONWOVEN FABRIC ARMSLING C121**

Adjustable by slides. Pack of 6 units. White colour. Latex free.

**INDICATIONS:** Pathologies requiring forearm support.

**SIZES:** Single size (fits both sides).

**3-FOREARM ARMSLING 9902**

Simple forearm support in nonwoven fabric, with a shoulder pad for added comfort. Height regulation by buckles, offering several different positions. Lightweight, easy to fit and very comfortable. Rest ring for thumb. Blue colour. Latex free.

**INDICATIONS:** Pathologies requiring forearm support.

**MEASUREMENT:** By length of forearm. Fits both sides.

<b>SIZES:</b>	S	28 cm
	M	35 cm
	L	41 cm
	XL	48 cm

**4-SHOULDER IMMOBILISER C120A AND C120B**

Shoulder immobiliser. Its height and width can be adjusted by Velcros. Available in two colours, C120A navy blue and C120B beige. Latex free.

**INDICATIONS:** Dislocation of shoulder and other pathologies requiring immobilization of the shoulder.

**SIZES:** Single size (fits both sides).

**5-SHOULDER IMMOBILISERS 4442 AND 4443**

Forearm and arm immobiliser. Support orthosis, which allows the rest of the escapohumeral joint. Suspenders crossed at the back for a better support. Model 4442 is made of foamed polyester on both faces. Arm support with immobilizing strap and with an elbow subjection band. Model 4443 is made of foamed polyester on one side and cotton on the other, suitable for warm climates. Blue colour. Latex free.

**INDICATIONS:** Dislocation of the shoulder and other pathologies requiring immobilization of a shoulder.

**SIZES:** Single size (fits both sides).

**1-ORTHOPRIM 901 ARMSLING**

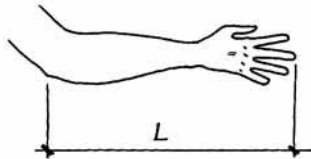
Made with a breathable fabric providing maximum patient comfort. Its regulation system with buckle and Velcro allows adjustment to the most convenient position for the patient. Latex free.

**INDICATIONS:** Pathologies requiring forearm support.

**MEASUREMENT:** By length of forearm. Fits both sides (L).

**SIZES:**

S	28-36 cm
M	35-42 cm
L	41-49 cm
XL	48-56 cm



**2-ORTHOPRIM 903 ARMSLING/SHOULDER IMMOBILISER**

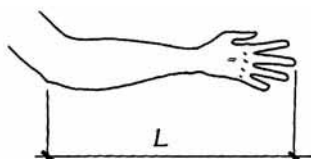
Made with a padded fabric, this arm sling is adjustable in height by means of buckle and Velcro. Designed with an immobilisation swathe. Latex free.

**INDICATIONS:** Pathologies requiring arm support or shoulder immobilisation.

**MEASUREMENT:** By length of forearm. Fits both sides (L).

**SIZES:**

S	35-41 cm
M	40-44 cm
L	43-49 cm
XL	48-55 cm



**3-ORTHOPRIM 902 SHOULDER IMMOBILISER**

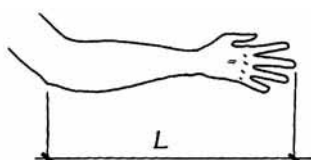
Immobilisation orthosis allowing the rest of the scapulohumeral joint. Shoulder straps crossed in back providing a better support and comfort. Designed with a wide swathe assuring an adequate shoulder immobilisation. Latex free.

**INDICATIONS:** Pathologies requiring shoulder immobilisation.

**MEASUREMENT:** By length of forearm. Fits both sides (L).

**SIZES:**

S	28-42 cm
L	41-56 cm





### 1-NEOPRENE SHOULDER BRACE TOP LINE TL 24

Shoulder brace providing therapeutic heat to the shoulder joint. 5 mm neoprene. The outside is blue with soft red towelling on the inside that absorbs sweat. Blue colour.

**INDICATIONS:** Treatment of painful processes of the shoulder. Prevents injury when practising sports.

**MEASUREMENT:** Breast circumference.

<b>SIZES:</b>	S	82-95 cm
	M	92-105 cm
	L	102-115 cm
	XL	112-125 cm



### 2-HEMISAFE SHOULDER BRACE

Subluxation brace properly positions shoulder to reduce shoulder pain. Made with a breathable material, Mesh Spacer, designed to provide support to unilateral subluxation produced by hemiplegia. It positions the humerus head into the glenoid cavity and the scapula into external rotation, providing a normal pattern allowing the patient having mobility. It includes a cushion which can be used to produce abduction of the upper limb. Can be combined with Hemisling. White colour. Left or right.

**INDICATIONS:** Prevention or treatment of the pain in hemiplegic shoulder. Prevention or treatment of shoulder subluxation.

**MEASUREMENT:** Thorax circumference.

<b>SIZES:</b>	S	80-100cm
	M	100-120cm
	L	120-140cm
	XL	140-160cm



### 3-HEMISLING SHOULDER BRACE

Shoulder immobiliser made with a breathable material, Mesh Spacer, specially designed for hemiplegic patients. Can be used together with Hemisafe or individually. The shoulder strap has an anatomical shape and is lined for a better comfort for the patient. Includes a handle to place the hand in a functional position. White colour. Bilateral.

**INDICATIONS:** Painful phases after subluxations, Humerus subcapital fracture, Lesions of acromioclavicular articulations, post-surgical treatments.

**MEASUREMENT:** Forearm length.

<b>SIZES:</b>	S/M	34-43cm
	L/XL	44-53cm



### 4-CLAVISAN CLAVICLE IMMOBILISER

Orthosis for the immobilization of the clavicle. Latex free.

**INDICATIONS:** Stable fractures of the clavicle. Others pathologies where a shoulder retropulsion is needed.

**COUNTER-INDICATIONS:** Instable fractures of the clavicle, or which show neurovascular complications, or which need surgery to obtain stabilization.

**SIZES:** For this product size must be defined measuring from the centre of the back, underneath the axilla, around the shoulder and to the centre of the back.

	S	56-68cm
	M	68-78cm
	L	78-88cm
	XL	88-100cm

## 1-GUMIFIX

Gumifix is a shoulder immobiliser allowing the elbow movement when needed thanks to the opening of the forearm sleeve. -Allows an early elbow mobilisation while keeping the shoulder immobilized. -It influences positively in the recovery of the shoulder, without the complications produced by the elbow immobilization. Latex free.

**INDICATIONS:** Shoulder immobilization as symptomatic treatment of shoulder contusion. Post -surgery of: Acromion surgery, Ligament reparation, Resection of the third distal of the clavicle, Tenotomy and tenodesis of the long head of the biceps, Synthesis of clavicle fractures and proximal epiphysis of the humerus, Surgery of prosthesis

**SIZES:** Universal size, available in right and left sides.



## 2-SHOULDER ABDUCTION ORTHOSIS ABIDI, 904 30°/45°

Consists of a cushion with a base that allows a 30° angle of abduction for the shoulder. ABIDI is Blue colour. 904 is Gray colour.

Two adjustments.

- 1.- Arm and forearm straps joined by Velcro to the belt attachment.
- 2.- Attachment at waist that positions and immobilizes the elbow and forearm.

**INDICATIONS:** Postsurgical treatment of the shoulder, after reconstruction of rotator cuff injury and anteroposterior capsule reconstruction. Shoulder orthosis. Fractures of the head of the shoulder. Post arthroscopy of shoulder.

### ACCESORIES ABIDI AND 904:

ABIDI 02, and ABIDI 904: 15° wedge. The wedge ensures complete support in the axial zone. Hook and loop velcros attachments.

ABIDI 03: rehabilitation ball. To exercise hand. Attached to the base cushion by means of a Velcro closure.

**SIZES:** Single size (fits both sides).



## 3-SHOULDER ABDUCTION ORTHOSIS ABIDI, 905 15°

The base cushion made of polyurethane foam covered by foam material can be adjusted by Velcro closure. The curved shape fits the patient's waist. The orthosis 's height can be adjusted by means of a slide, joined to the abduction cushion by means of Velcro. Padded shoulder part increases the support base and minimizes pressure on the shoulder blade. ABIDI is Blue colour. 905 is Gray colour.

**INDICATIONS:** Postsurgical treatment of the shoulder, postreconstruction of rotator cuff injury and anteroposterior capsule reconstruction. Shoulder prosthesis. Fractures of the head of the humerus. Postarthroscopy of the shoulder.

**MEASUREMENT:** By length of forearm. Fits both sides.

<b>SIZES:</b>	S	28-38 cm
	L	38-48 cm



## 4-SHOULDER ORTHOSIS ORTHOPRIM 906

Shoulder orthosis made in breathable material, designed to provide support to the unilateral sub-luxation produced by a hemiplegia. Allows the positioning of the humerus head in the glenoidea cavity and the scapula in external rotation, providing a normal pattern allowing the patient to have mobility. Grey colour.

**INDICATIONS:** Prevention or treatment of the pain in hemiplegic shoulder and of the shoulder subluxation.

**SIZES:** Only one size. Fits both left and right side



## ELBOW SUPPORTS



1

### 1-NEOPRIM EPICONDYLITIS ELBOW SPLINT N557

Universal elbow support made of 3 mm neoprene that alleviates the load on the flexor and extensor muscles. Perfect fit. Neoprene pad that can be positioned to provide pressure. Beige colour. Fits both sides.

**INDICATIONS:** Treatment of lateral epicondylitis (tennis elbow) and medial epicondylitis (golf elbow).

**SIZES:** SINGLE.



2

### 2-TOP LINE EPICONDYLITIS ELBOW SPLINT TL04

Made of 3 mm neoprene with soft red towelling inside. Neoprene pad that can be positioned to provide pressure. Blue colour. Fits both sides.

**INDICATIONS:** Treatment of lateral epicondylitis (tennis elbow) and medial epicondylitis (golf elbow).

**SIZES:** SINGLE.



3

### 3-ORTHOPRIM LT BREATHABLE ELBOW SUPPORT 161

Adjustable epicondylitis support with removable neoprene pad. Elastic breathable three-layers material. Colour champagne. Latex free.

**INDICATIONS:** Treatment of lateral epicondylitis (tennis elbow) and medial epicondylitis (golf elbow).

**MEASUREMENT:** Arm circumference 3 cm below elbow. Fits both sides.

<b>SIZES:</b>	S	20-25 cm
	M	25-30 cm
	L	30-35 cm



4

### 4-NEOPRIM ELBOW SUPPORT N522

Made of 3 mm neoprene. Provides heat and compression to the joint. With subcondylar band, pressure adjustable. Beige colour.

**INDICATIONS:** Treatment of lateral epicondylitis and medial epicondylitis. Protection from blows and falls when practising sport.

**MEASUREMENT:** Largest part of forearm circumference. Fits both sides.

<b>SIZES:</b>	S	23-25 cm
	M	25-28 cm
	L	28-31 cm
	XL	31-33 cm



5

### 5-TOP LINE LONG ELBOW SUPPORT TL03

Elbow support with subcondylar band. Blue 3 mm neoprene with soft red towelling on the inside.

**INDICATIONS:** Treatment of lateral epicondylitis and medial epicondylitis. Protection from blows and falls when practising sport.

**MEASUREMENT:** Largest part of forearm circumference. Fits both sides.

<b>SIZES:</b>	S	22-24 cm
	M	24-26 cm
	L	26-28 cm
	XL	28-30 cm



6

### 6-ELASIL ELBOW SUPPORT L102

Elbow support made of breathable fabric. Elastic in both directions, providing uniform compression. Viscoelastic silicon inserts. Lightweight and breathable. No seams. White colour.

**INDICATIONS:** Treatment of lateral epicondylitis and medial epicondylitis. Protection from blows and falls when practising sport.

**MEASUREMENT:** Elbow circumference with the arm at an angle of 45°. Fits both sides.

<b>SIZES:</b>	S	25-27 cm
	M	27-29 cm
	L	29-31 cm
	XL	31-33 cm



## 1-NEOPRIM SHORT WRIST SUPPORT N527

Short wrist brace made of 3 mm neoprene. Provides support and protection to the wrist and forearm. Beige colour. Latex free.

**INDICATIONS:** Sprains, bursitis and tendonitis of the wrist. Mild traumatism.

**MEASUREMENT:** Wrist circumference. Fits both sides.

<b>SIZES:</b>	S	13-15 cm
	M	15-18 cm
	L	18-20 cm



1

## 2-NEOPRIM LONG WRIST SUPPORT N547

Long wrist brace made of 3 mm neoprene with opening for the thumb. Thumb abduction and metacarpal protection. Beige colour. Latex free.

**INDICATIONS:** General pains of the wrist, sprains, rheumatoid and inflammatory lesions.

**MEASUREMENT:** Wrist circumference. (R, L).

<b>SIZES:</b>	S	13-15 cm
	M	15-18 cm
	L	18-20 cm



2

## 3-NEOPRIM OPEN WRIST SUPPORT N562

Wrap-around support incorporating a flat, removable aluminium plate, which can be shaped to individual needs. Made of 3 mm neoprene. Pressure adjustable by means of Velcro- closures. Beige colour. Latex free.

**INDICATIONS:** Sprains, bursitis and tendonitis of the wrist. Mild traumatism.

**MEASUREMENT:** Wrist circumference. (R, L).

<b>SIZES:</b>	S	13-15 cm
	M	15-18 cm
	L	18-20 cm



3

## 4-TOP LINE SHORT WRIST SUPPORT TL01

Short wrist support made of 3 mm neoprene. Soft red towelling inside. Support and protection of the wrist and forearm when they are involved in vigorous activity. Blue colour.

**INDICATIONS:** Sprains, bursitis and tendonitis of the wrist. Mild traumatism.

**MEASUREMENT:** Wrist circumference. Fits both sides.

<b>SIZES:</b>	S	15-16 cm
	M	16-17 cm
	L	17-19 cm
	XL	19-21 cm



4

## 5-TOP LINE LONG WRIST SUPPORT TL02

Long wrist support made of 3 mm neoprene with opening for the thumb. Soft red towelling inside. Blue colour.

**INDICATIONS:** General pains of the wrist, sprains, rheumatoid and inflammatory lesions.

**MEASUREMENT:** Arm palm circumference. (R, L).

<b>SIZES:</b>	S	17-19 cm
	M	19-21 cm
	L	21-23 cm
	XL	23-25 cm



5



### 1•SHORT OPEN ORTHOSIS WITHOUT THUMB C50

Wrist support in elastic material providing an excellent and comfortable fit. Removable mouldable small metal strip for palm. Provides firm support and reduces the load on the carpometacarpal joints. Beige colour.

**INDICATIONS:** Carpal tunnel syndrome, tendonitis.

**MEASUREMENT:** Wrist circumference. (R, L).

<b>SIZES:</b>	S	12-15 cm
	M	15-17 cm
	L	17-19 cm
	XL	19-21 cm



### 2•LONG OPEN ORTHOSIS WITHOUT THUMB C60

Made of strong elastic material. Adjustable by Velcro closures. Elastic strap around the wrist to ensure better grip. Removable small metal strip for palm. Beige colour.

**INDICATIONS:** Carpal tunnel syndrome, tendonitis.

**MEASUREMENT:** Wrist circumference. (R, L).

<b>SIZES:</b>	S	12-15 cm
	M	15-17 cm
	L	17-19 cm
	XL	19-21 cm



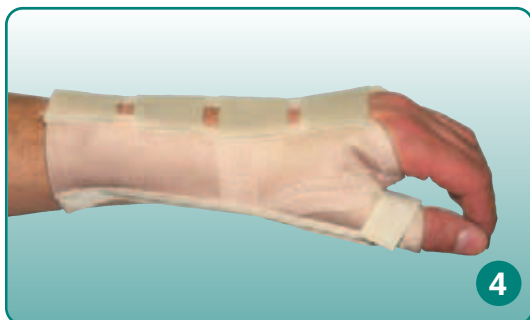
### 3•SHORT OPEN ORTHOSIS WITH THUMB PLATE C70

Wrist support made of elastic material providing an excellent and comfortable fitting, with removable and mouldable thumb metal strip. Indicated for pathologies requiring immobilization, stabilization and protection of the thumb, as well as protection of the carpometacarpal joints. Beige colour.

**INDICATIONS:** Trapeziometacarpal arthritis of the thumb. Lesions of metacarpal joints.

**MEASUREMENT:** Wrist circumference. (R, L).

<b>SIZES:</b>	S	12-15 cm
	M	15-17 cm
	L	17-19 cm
	XL	19-21 cm



### 4•LONG THUMB ORTHOSIS WITH PALM METAL STRIP C80

Wrist support made of elastic material providing an excellent and comfortable fitting, with removable and mouldable thumb metal strip. Indicated for pathologies requiring immobilization and protection of the trapeziometacarpal and metacarpalphalangeal joints. Beige colour.

**INDICATIONS:** Trapeziometacarpal arthritis of the thumb. Lesions to metacarpal joints.

**MEASUREMENT:** Wrist circumference. (R, L).

<b>SIZES:</b>	S	12-15 cm
	M	15-17 cm
	L	17-19 cm
	XL	19-21 cm

**1-WRIST ORTHOSIS WITH 1 CINCH STRAP 931**

Wrist orthosis with wide and firm cinch strap wrapping-around the articulation providing adjustment by buckle. Supplied with two removable and mouldable metal strips, one for palm and a dorsal one providing support and immobilisation on the carpometacarpal articulations.

**INDICATIONS:** Carpal tunnel syndrome and tendonitis.

**MEASUREMENT:** Wrist circumference. (R, L).

**SIZES:**

S	12-15 cm
M	15-17 cm
L	17-19 cm
XL	19-21 cm



**2-WRIST ORTHOSIS WITH 2 CINCH STRAPS 932**

Wrist orthosis made of an extremely comfortable padded fabric. Supplied with a removable and mouldable metal strip for palm, providing support and immobilization on the carpometacarpal articulations.

**INDICATIONS:** Carpal tunnel syndrome and tendonitis.

**MEASUREMENT:** Wrist circumference. (R, L).

**SIZES:**

S	12-15 cm
M	15-17 cm
L	17-19 cm
XL	19-21 cm



**3-WRIST ORTHOSIS WITH 1 CINCH STRAP 933**

Wrist orthosis with a wide and firm cinch strap wrapping-around the articulation allowing optimum adjustment and pressure. Provided with a removable and mouldable metal strip for palm providing support and immobilisation on carpometacarpal articulations and a second mouldable metal strip on the thumb.

**INDICATIONS:** Thumb rhizarthrose and lesions on carpometacarpal articulations.

**MEASUREMENT:** Wrist circumference. (R, L).

**SIZES:**

S	12-15 cm
M	15-17 cm
L	17-19 cm
XL	19-21 cm





1

**1-FUNCTIONAL HAND ORTHOSIS ORTHOPRIM 934**

Made in breathable fabric for the treatment of moderated contractures of the wrist, hand and fingers. It has a wrist strap to maintain it in the suitable position and to secure a progressive stretching. The adjustment of the thumb correction can be varied. Optionally, the fingers separator 938 could be assembled on it or the fingers extensor and separator 939.

**INDICATIONS:** Contracture in flexion or hyperextension of the wrist, including contracted fist. Contracture of the hand with or without radial or ulnar deviations of the hand. Contractures in flexion or hyperextension of the interphalangeal articulations including thumb abduction. Rheumatoid arthritis.

**MEASUREMENT:** Hand palm width. Specify right or left.

<b>SIZES:</b>	S	5,5 - 7 cm
	M	7 - 8,5 cm
	L	8,5 - 10,5 cm



2

**2-POSITIONING HAND ORTHOSIS ORTHOPRIM 935**

Made in breathable fabric for the treatment of severe to moderate flexion and of spasticity in wrist, hand and fingers. Supplied with 2 rollers of different size to gradually increase the extension of the proximal interphalangeal joints and metacarpophalangeal. Optionally, the fingers separator 938 could be assembled on it or the fingers extensor and separator 939.

**INDICATIONS:** Contracture in flexion or hyperextension of the wrist, including contracted fist. Contracture of the hand with or without radial or ulnar deviations of the hand. Contractures in flexion or hyperextension of the interphalangeal articulations including thumb abduction. Rheumatoid arthritis.

**MEASUREMENT:** Hand palm width. Specify right or left.

<b>SIZES:</b>	S	5,5 - 7 cm
	M	7 - 8,5 cm
	L	8,5 - 10,5 cm



3

**3-FUNCTIONAL HAND ORTHOSIS FOR CHILDREN ORTHOPRIM 936**

Orthosis made in breathable fabric for the treatment of moderate contractures in wrist, hand and fingers. Specially designed considering the specific morphology of the infantile or youthful hand. It has a wrist strap to maintain it in the suitable position and to secure a progressive stretching. Optionally, the fingers separator 938 could be assembled on it or the fingers extensor and separator 939.

**INDICATIONS:** Contracture in flexion or hyperextension of the wrist, including contracted fist. Contracture of the hand with or without radial or ulnar deviations of the hand. Contractures in flexion or hyperextension of the interphalangeal articulations including thumb abduction. Rheumatoid arthritis.

**MEASUREMENT:** Hand palm width. Specify right or left.

<b>SIZES:</b>	Child 4 - 5,3 cm
	Youth 5 - 6,5 cm



4

**4-POSITIONING HAND ORTHOSIS FOR CHILDREN ORTHOPRIM 937**

Made in breathable fabric for the treatment of severe to moderate flexion and of spasticity in wrist, hand and fingers. Specially designed considering the specific morphology of the infantile or youthful hand. Supplied with 2 rollers of different size to gradually increase the extension of the proximal interphalangeal joints and metacarpophalangeal. Provides correction of the ulnar deviation. Optionally, the fingers separator 938 could be assembled on it or the fingers extensor and separator 939.

**INDICATIONS:** Contracture in flexion or hyperextension of the wrist, including contracted fist. Contracture of the hand with or without radial or ulnar deviations of the hand. Contractures in flexion or hyperextension of the interphalangeal articulations including thumb abduction. Rheumatoid arthritis.

**MEASUREMENT:** Hand palm width. Specify right or left.

<b>SIZES:</b>	Child 4 - 5,3 cm
	Youth 5 - 6,5 cm



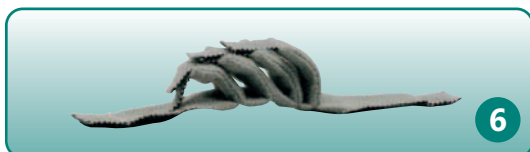
5

**5-FINGERS SEPARATOR ORTHOSIS ORTHOPRIM 938**

Provides fingers separation and a light abduction. It protects the fingers skin integrity. To be used in 934, 935, 936 y 937

**INDICATIONS:** When fingers separator is required.

**SIZE:** Only one size. Fits both left and right side.



6

**6-FINGERS EXTENSOR AND SEPARADOR ORTHOSIS ORTHOPRIM 939**

Provides fingers separation and helps to the extension of the interphalangeal joints. It protects the fingers skin integrity. To be used in 934, 935, 936 y 937.

**INDICATIONS:** When extensor and separator of the fingers is required.

**SIZE:** Only one size. Fits both left and right side.

## 1-SHORT OPEN WRIST ORTHOSIS C150

Without thumb. Made with elastic material offering an excellent fitting and comfort. Removable and mouldable palm metal strip. Provides firm supports and reduces the load on the carpometacarpal articulations.

**INDICATIONS:** Carpal Tunnel Syndrome, tendonitis.

**MEASUREMENT:** Wrist circumference.

**SIZES:** Specify right or left.

S	12-15cm
M	15-17cm
L	17-19cm
XL	19-21cm



## 2-LONG OPEN WRIST ORTHOSIS C160

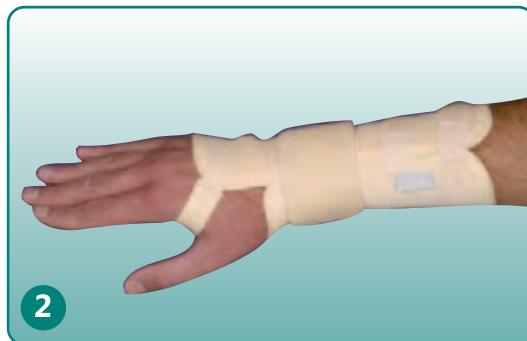
Without thumb. Made with strong elastic material offering an excellent fitting and comfort. Adjustable by Velcro closures. Elastic strap around the wrist to obtain better support. Adjustable and removable and mouldable palm metal strip.

**INDICATIONS:** Carpal Tunnel Syndrome, tendonitis.

**MEASUREMENT:** Wrist circumference.

**SIZES:** Specify right or left.

S	12-15cm
M	15-17cm
L	17-19cm
XL	19-21cm



## 3-SHORT OPEN WRIST ORTHOSIS C170

With thumb metal strip. Made with elastic material offering an excellent fitting and comfort with removable and mouldable thumb metal strip.

**INDICATIONS:** Pathologies requiring immobilization, stabilization and protection of the thumb, as well as protection of the carpometacarpal articulations. Thumb rhizarthrose, lesions of carpometacarpal articulations.

**MEASUREMENT:** Wrist circumference.

**SIZES:** Specify right or left.

S	12-15cm
M	15-17cm
L	17-19cm
XL	19-21cm



## 4-LONG WRIST ORTHOSIS C180

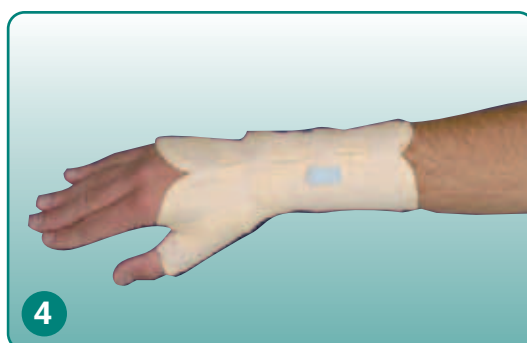
With palm metal strip. Made with elastic material offering an excellent fitting and comfort with removable and mouldable palm metal strip. Provides firm support and reduces the load on the carpometacarpal articulations.

**INDICATIONS:** Thumb rhizarthrosis, lesions of carpometacarpal articulations.

**MEASUREMENT:** Wrist circumference.

**SIZES:** Specify right or left.

S	12-15cm
M	15-17cm
L	17-19cm
XL	19-21cm



## 5-WRIST ORTHOSIS WITH ADJUSTABLE LACING AND VELCRO CLOSURES C190

Ideal wrist splint for persons with difficulties in self-fitting. Supplied with a removable, malleable metal strip in palm easy to adjust and permits full flexion of the fingers and range of movement of the thumb. Its special design with lacing facilitates an adequate compression.

**INDICATIONS:** Rheumatoid arthritis, ligamentous instability, tendon strains, arthritis and strains.

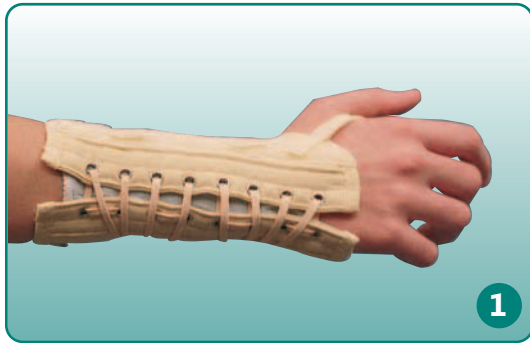
**MEASUREMENT:** Wrist circumference.

**SIZES:** Specify right or left.

S	12-15cm
M	15-17cm
L	17-19cm
XL	19-21cm



## TEXTILE WRIST ORTHOSIS



1

### 1-ORTHOPRIM LT WRIST ORTHOSIS 144

Closed wrist orthosis with adjustable lacings and velcro closures. Easy to adjust by patients with rheumatoid arthritis. Removable, plain and metal strip. Allows full flexion of the fingers and range of movement of the thumb.

**INDICATIONS:** Rheumatoid arthritis, ligamentous instability, tendon strains, arthritis, sprains.

**MEASUREMENT:** Wrist circumference. Specify right or left.

<b>SIZES:</b>	S	11-14cm
	M	14-17cm
	L	17-20cm
	XL	20-23cm



2

### 2-SHORT WRIST ORTHOSIS WITHOUT THUMB C250

Made of an elastic fabric providing highest adaptation and comfort. Supplied with a removable and mouldable metal strip for palm. Offers firm support and unload the carpometacarpal articulations. Blue and black colour.

**INDICATIONS:** Carpal tunnel syndrome and tendonitis.

**MEASUREMENT:** Wrist circumference. (R, L).

<b>SIZES:</b>	S	12-15 cm
	M	15-17 cm
	L	17-19 cm
	XL	19-21 cm



3

### 3-LONG WRIST ORTHOSIS WITHOUT THUMB C260

Made of a strong elastic fabric providing highest adaptation and comfort. Adjustable by means of rounded Velcro. Adjustable and removable metal strip on palm. Blue and black colour.

**INDICATIONS:** Carpal tunnel syndrome and tendonitis.

**MEASUREMENT:** Wrist circumference. (R, L).

<b>SIZES:</b>	S	12-15 cm
	M	15-17 cm
	L	17-19 cm
	XL	19-21 cm



4

### 4-SHORT WRIST ORTHOSIS WITH THUMB C270

Made of an elastic material providing highest adaptation and comfort with a removable and mouldable metal strip on thumb. Blue and black colour.

**INDICATIONS:** Pathologies which require immobilisation, stabilisation and thumb protection, as well as protection of the carpometacarpal articulations; thumb rhizarthrose, lesions of the carpometacarpal articulations.

**MEASUREMENT:** Wrist circumference. (R, L).

<b>SIZES:</b>	S	12-15 cm
	M	15-17 cm
	L	17-19 cm
	XL	19-21 cm



5

### 5-LONG WRIST ORTHOSIS WITH THUMB C280

Made of an elastic material providing highest adaptation and comfort with a removable and mouldable metal strip on palm. Provides firm support and unload the carpometacarpal articulations. Blue and black colour.

**INDICATIONS:** Thumb rhizarthrose. Lesions of carpometacarpal articulations.

**MEASUREMENT:** Wrist circumference. (R, L).

<b>SIZES:</b>	S	12-15 cm
	M	15-17 cm
	L	17-19 cm
	XL	19-21 cm

## 1•WRIST SUPPORT 28240P

Wrist support prevents dorsal flexion and the excessive tendons pulling. Includes two bones to change the grade of support. A bone for moderate support: two bones for greater support. Blue colour. Latex free.

**INDICATIONS:** Helping the patient to limit movements that may cause injury or pain.

**MEASUREMENT:** Wrist circumference. (R, L).

<b>SIZES:</b>	S	11-14 cm
	M	14-17 cm
	L	17-20 cm
	XL	20-23 cm



## 2•WRIST SUPPORT 28210P

Wrist support for work with elastic support for wrist. Anti-slipping textile in the palmar area (vulcanised rubber). Separation of the fingers at the level of the head of the metacarpal. Blue colour. Latex free.

**INDICATIONS:** Preventing injuries at work.

**MEASUREMENT:** Wrist circumference. (R, L).

<b>SIZES:</b>	S	11-14 cm
	M	14-17 cm
	L	17-20 cm
	XL	20-23 cm



# RHEUMATIC ORTHOSIS

## 3•RHEUMATIC HAND ORTHOSIS C13

The bands correcting the position of the fingers are joined one to the other by velcros. The palmar zone contains an internal reinforcement providing soft and flexible support. Machine washable. Improves alignment and helps hand and wrist functions. Retains warm, reducing pain and inflammation.

**INDICATIONS:** Arthritic and postsurgical support.

**MEASUREMENT:** Arm palm circumference. (R, L).

<b>SIZES:</b>	S	16-18 cm
	M	18-21 cm
	L	21-25 cm



# ORTHOPRIM THREE-LAYERS ORTHOSIS

## 4•ORTHOPRIM LB WRIST SUPPORT 041

Wrist support made with breathable material incorporating a flat, removable aluminium plate, which can be shaped to individual needs. Lightweight material with cotton inside providing relief to the joints. Blue colour.

**INDICATIONS:** Rheumatism, ligament instability, swelling of tendons, arthritis, sprains.

**MEASUREMENT:** Hand width. (R, L).

<b>SIZES:</b>	S	6-8 cm
	M	8-10 cm
	L	10-12 cm





**1-PLASTIC HAND ORTHOSIS MODEL 1.1 AND 1.2**

Made of white low-density polyethylene. Functional position at 35° dorsiflexion. With ventilation drill holes. Velcro closures on a slide. Model 1.1 has no lining, and model 1.2 is lined in polyethylene foam.

**INDICATIONS:** Carpal tunnel syndrome. Tenosynovitis. Inflammatory and posttraumatic processes of the carpal region.

**MEASUREMENT:** Arm palm circumference. (R, L).

**SIZES:**

S	14-16 cm
M	16-18 cm
L	18-20 cm



**2-PLASTIC HAND ORTHOSIS 28542P**

Made in chloride polyvinyl (KYDEX). This lightweight wrist brace prevents dorsal and palmar flexion of the wrist. Designed to stabilize wrists showing destabilization of the hands at night due to carpal tunnel syndrome. It does not totally immobilize the wrist, but allows some degree of mobility. A hot air gun can be used to make small adjustments or shape the splint when fitting it. In patients with sensitive skin, using a soft bandage under the orthosis is recommended. Elastic Velcro closures that make fitting easier.

**INDICATIONS:** Night splint for carpal tunnel syndrome.

**MEASUREMENT:** Wrist circumference. (R, L).

**SIZES:**

S	13-17 cm
L	18-22 cm



**3-ORTHOISIS 8705**

Made of 3 mm low-density polyethylene. Plastic orthosis shaped to fit the hand, wrist and forearm, providing a neutral position for the hand at rest. Small adjustments can be made to the shape of the orthosis using a hot air gun.

**INDICATIONS:** Carpal tunnel syndrome. Tenosynovitis. Inflammatory and posttraumatic processes of the carpal region.

**MEASUREMENT:** Arm palm circumference. (R, L).

**SIZES:**

S	13-15 cm
M	15-17 cm
L	17-19 cm
XL	19-21 cm



**1-PLASTIC ORTHOSIS MODEL 2.1 AND 2.2**

Made of beige high-density polyethylene. Functional hand position, with the thumb in opposition and the wrist in a neutral position. Three Velcro grips on the forearm, carpal and metacarpophalangeal joint. Velcro grip for thumb (optional adjustment). Polyethylene foam small cushion attaching the carpus and metacarpal area. Model 2.1 has no lining, and model 2.2 is lined in polyethylene foam.

**INDICATIONS:** Central or peripheral neurological lesions (flaccid paralysis, spastic paralysis). Prevention and treatment of deformities of rheumatic origin. Carpal tunnel syndrome.

**MEASUREMENT:** Hand width. (R, L).

<b>SIZES:</b>	S	7-8 cm
	M	8-9 cm
	L	9-10 cm



**2-PLASTIC ORTHOSIS MODEL 5.1 AND 5.2**

Made of white high-density polyethylene. Closure by Velcro at the carpal level.

Model 5.1 has no lining, and model 5.2 is lined in polyethylene foam.

**INDICATIONS:** Trapeziometacarpal arthritis, De Quervain's disease.

**MEASUREMENT:** Wrist circumference. (R, L).

<b>SIZES:</b>	S	14-16 cm
	M	16-18 cm
	L	18-20 cm



**3-ORTHOSIS 8706**

Made of 3 mm low-density polyethylene. This orthosis provides comfortable support to the wrist and thumb. A hot air gun can be used to make small adjustments or shape the splint when fitting it.

**INDICATIONS:** Carpal tunnel syndrome. Tenosynovitis, inflammatory and posttraumatic processes of the carpal region.

**MEASUREMENT:** Wrist circumference. (R, L).

<b>SIZES:</b>	S	13-15 cm
	M	15-17 cm
	L	17-19 cm
	XL	19-21 cm



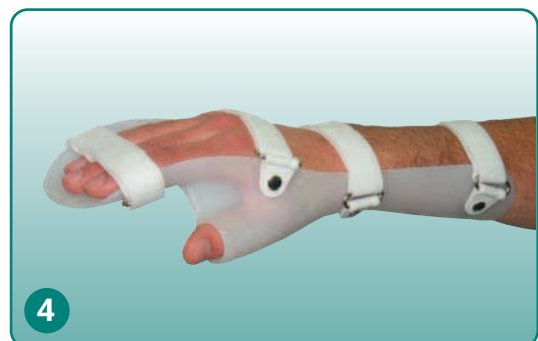
**4-ORTHOSIS 8707**

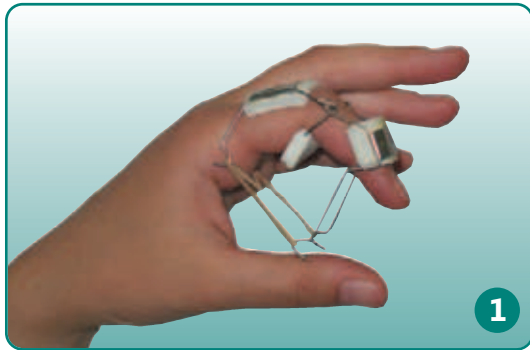
Made of 3 mm low-density polyethylene. It can be moulded with a hot air gun, ensuring an excellent fit. Ventilated to provide additional user comfort. Slightly abducted thumb position.

**INDICATIONS:** Central or peripheral neurological lesions (flaccid paralysis, spastic paralysis). Prevention and treatment of deformities of rheumatic origin. Carpal tunnel syndrome.

**MEASUREMENT:** Wrist circumference. (R, L).

<b>SIZES:</b>	S	13-15 cm
	M	15-17 cm
	L	17-19 cm
	XL	19-21 cm





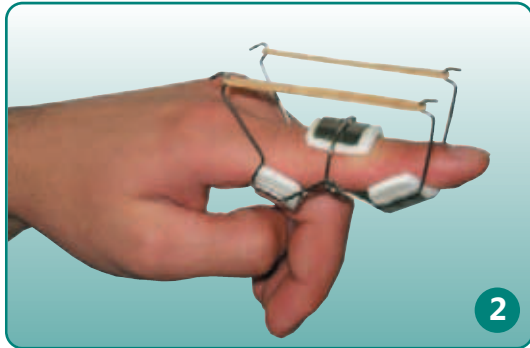
### 1•FINGER FLEXION SPLINT C1

Dynamic splint in steel plate covered in polyethylene foam, with anchorage for rubber that makes flexion easier.

**INDICATIONS:** For injuries requiring assistance to the flexor tendon.

**MEASUREMENT:** Size according to finger width in the proximal phalanx.

<b>SIZES:</b>	S	17-22 mm
	M	23-26 mm
	L	27-32 mm



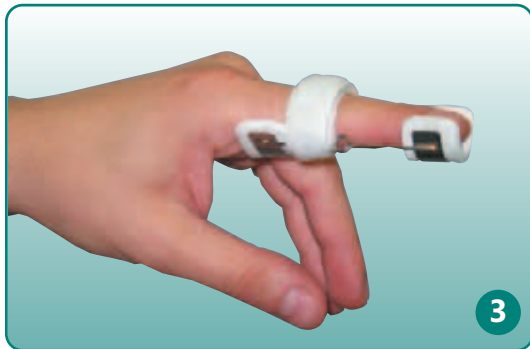
### 2•FINGER EXTENSION SPLINT C2

Dynamic splint in steel plate covered in polyethylene foam, with anchorage for rubber that make extension easier.

**INDICATIONS:** Increases the extensibility of the proximal interphalangeal joint. Bouttonnière deformity.

**MEASUREMENT:** Size according to finger width in the proximal phalanx. Fits both sides.

<b>SIZES:</b>	S	17-22 mm
	M	23-26 mm
	L	27-32 mm



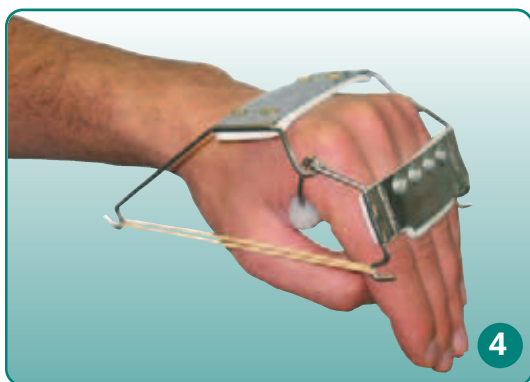
### 3•FINGER EXTENSION SPLINT WITH SPRING C3

Dynamic splint in steel plate covered in polyethylene foam, with extensor spring.

**INDICATIONS:** Retraction of flexor tendon of the distal and proximal interphalangeal joints.

**MEASUREMENT:** Size according to finger width in the proximal phalanx. Fits both sides.

<b>SIZES:</b>	S	15-18 mm
	M	19-22 mm
	L	23-24 mm



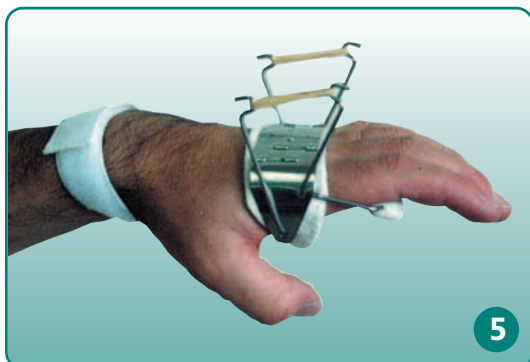
### 4•FLEXION SPLINT FOR METACARPALPHALANGEAL JOINT C4

Dynamic splint in steel plate covered in polyethylene foam, with anchorage for rubber that makes flexion easier, and special roller for radial paralysis.

**INDICATIONS:** Limited flexion due to paralysis, injury, retraction, or after repair of the extensor tendons.

**MEASUREMENT:** Hand width. Fits both sides.

<b>SIZES:</b>	S	71-78 mm
	M	81-86 mm
	L	87-94 mm



### 5•EXTENSION SPLINT FOR METACARPALPHALANGEAL JOINT C5

Dynamic splint extends the MCP joints when MCP extension is limited due to radial nerve injuries or after tendons repairs.

**INDICATIONS:** Effective when metacarpalphalangeal extension is limited by distal injuries to the radial nerve or after tendon repairs.

**MEASUREMENT:** Hand width. (R, L).

<b>SIZES:</b>	S	71-80 mm
	M	81-90 mm
	L	91-98 mm

**1•OPPENHEIMER SPLINT FOR WRIST DORSAL FLEXION C6**

Base for dynamic splints assembly splints and additional parts. With roller palm support for radial injuries.

**INDICATIONS:** Re-establishes muscle balance, prevents deformation.

**MEASUREMENT:** Hand width. (R, L).

<b>SIZES:</b>	S	60-73 mm
	M	74-88 mm
	L	89-110 mm



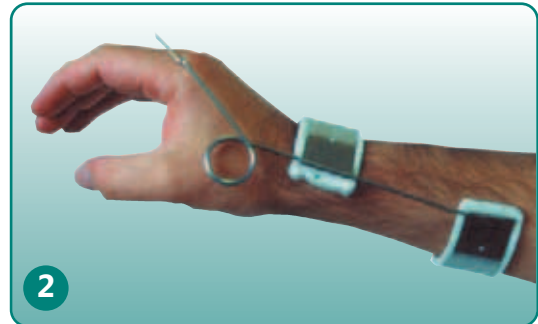
**2•OPPENHEIMER SPLINT WITHOUT PALM SUPPORT C6A**

Base for dynamic splints assembly and additional parts.

**INDICATIONS:** Re-establishes muscle balance, prevents deformation.

**MEASUREMENT:** Hand width. (R, L).

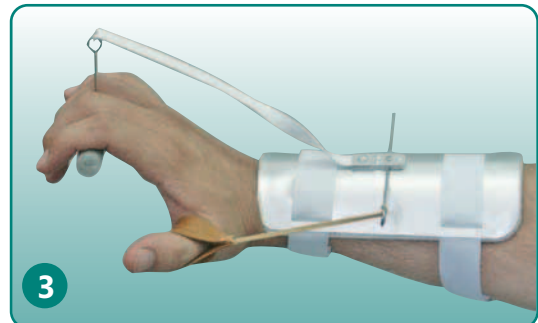
<b>SIZES:</b>	S	60-73 mm
	M	74-88 mm
	L	89-110 mm



**3•C8 SPLINT FOR RADIAL PARALYSIS WITH THUMB EXTENSION**

Provides active wrist movement and stabilisation. Prevents from deformity.

**SIZE:** Single size.



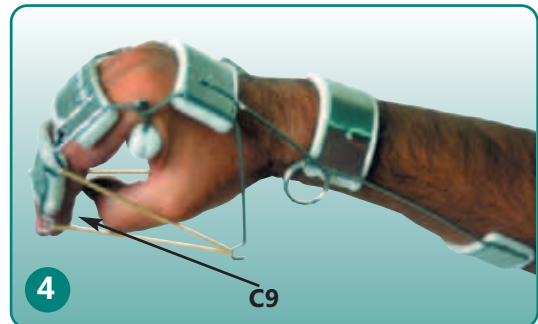
**4•SUPPLEMENT FOR FINGER FLEXION C9**

To assembly on C4 or C5.

**INDICATIONS:** When the distal interphalangeal joints require flexion.

**MEASUREMENT:** Width of the fingers at the first phalanx. Fits both sides.

<b>SIZES:</b>	S	67-74 mm
	M	75-82 mm
	L	83-90 mm



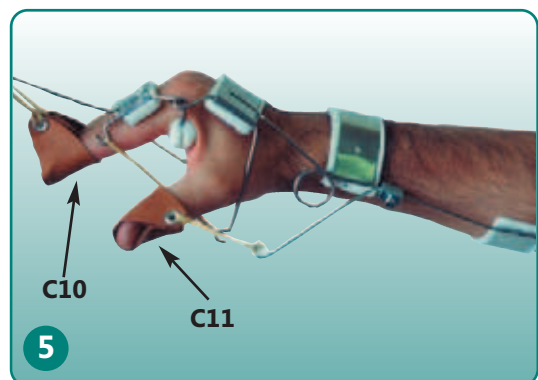
**5•SUPPLEMENT FOR FINGER EXTENSION C10**

To assembly on C4 or C5.

**INDICATIONS:** When the distal interphalangeal joints require extension.

**MEASUREMENT:** Width of the fingers at the first phalanx. Fits both sides.

<b>SIZES:</b>	S	67-74 mm
	M	75-82 mm
	L	83-90 mm



**5•SUPPLEMENT FOR THUMB EXTENSION C11**

To assembly on C4, C5, C6 and C7. When assembled to another splint allows extension of thumb.

**MEASUREMENT:** Width of the fingers at the first phalanx. Fits both sides.

**SIZES:** SINGLE

## THUMB ORTHOSIS



### 1-THUMB SPLINT 28548T, 28549T

Made of 3 mm neoprene, recovered inside with terry cloth and outside with beige reticulated Lycra. The material can be cut to allow free metacarpalphalangeal (MCP) movement. Beige colour.

**INDICATIONS:** Arthritis of the metacarpalphalangeal and carpometacarpal joints. Rheumatoid arthritis. Posttraumatic situations. Hypermobilization. After plastic surgery. Excessive effort.

**MEASUREMENT:** (R, L).

<b>SIZES:</b>	SHORT	Small hands	28548T
	LONG	Large hands	28549T



### 2-THUMB ORTHOSIS MODEL 4.1

Made in 2 mm high-density polyethylene, white colour. Fastening by Velcro at the carpal level. Model 4.2 is lined in polyethylene foam.

**INDICATIONS:** Thumb rhizarthrosis permitting pincers function. Posttraumatic immobilisation in first finger metacarpophalangeal joint.

**MEASUREMENT:** (R, L).

<b>SIZES:</b>	S	14-16 cm
	M	16-18 cm
	L	18-20 cm



### 3-THUMB ORTHOSIS MODEL 4.2

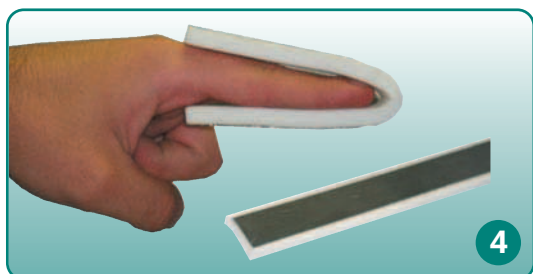
Made in 2 mm high-density polyethylene, white colour. Fastening by Velcro at the carpal level. Model 4.2 is lined in polyethylene foam.

**INDICATIONS:** Thumb rhizarthrosis permitting pincers function. Posttraumatic immobilisation in first finger metacarpophalangeal joint.

**MEASUREMENT:** (R, L).

<b>SIZES:</b>	S	14-16 cm
	M	16-18 cm
	L	18-20 cm

## FINGER SPLINTS



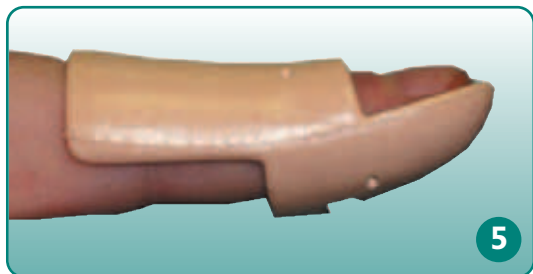
### 4-ALUMINIUM PADDED SPLINT FM2

Padded aluminium strip to immobilize the fingers. Can be cut to required length. Length 50 cm.

**INDICATIONS:** Immobilization of the interphalangeal joints.

**MEASUREMENT:** By width of the aluminium strip. Fits both sides.

<b>SIZES:</b>	2.5 cm	Pack 25 units
---------------	--------	---------------



### 5-STAX SPLINT

Splint to immobilize the distal interphalangeal joints. Made of polyethylene. Available in pack of 12 units.

**INDICATIONS:** Distal immobilization of the interphalangeal joints.

**MEASUREMENT:** Circumference of the distal interphalangeal joint. Fits both sides.

<b>SIZES:</b>	Circumference
1	5 cm
2	5,5 cm
3	5,8 cm
4	6,1 cm
5	6,3 cm
5,5	6,8 cm
6	7,3 cm



### 3-SPLINT TO IMMOBILIZE THE DISTAL INTERPHALANGEAL JOINT RF

Made of mouldable aluminium and lined inside. Available in pack of 12 units.

**INDICATIONS:** Cases requiring immobilization of the distal interphalangeal joints.

**MEASUREMENT:** Circumference of the distal interphalangeal joint. Fits both sides.

<b>SIZES:</b>	S	5,7 cm
	M	7 cm
	L	7,6 cm

## 1-PAVLIK HARNESS 115

Quick-release plastic buckle providing secure, safe closure. Abduction degree can be independent in each hip. Free movement prevents necrosis of the femur head.

**INDICATIONS:** Sub-luxation and congenital hip luxation. Hip dysplasia.

**MEASUREMENT:** Breast circumference.

<b>SIZES:</b>	XS	23-33 cm
	S	33-40 cm
	M	40-50 cm
	L	50-60 cm



1

## 2-DENNIS BROWN SPLINT C29

Polyethylene padded on thigh edges for comfort. Structure consisting of stainless steel inserts.

**INDICATIONS:** Congenital hip luxation and sub-luxation. Hip dysplasia.

**MEASUREMENT:** Distance between knees in abducted position.

<b>SIZES:</b>	S	18-23 cm
	M	24-29 cm
	L	30-40 cm



2

## 3-FREJKA SPLINT 117F

Flexible polyethylene splint with foam-padded edges for comfort covered by a nice textile diaper.

**INDICATIONS:** Congenital hip luxation and sub-luxation. Hip dysplasia.

**MEASUREMENT:** Distance between knees in abducted position.

<b>SIZES:</b>	S	15-18 cm
	M	18-20 cm
	L	20-25 cm
	XL	25-28 cm



3

## 4-FERRARA SPLINT F01

Consisting on a neoprene padded pillow covered by a nice textile material and a textile diaper. The product has two different pillows to follow the baby growth.

**INDICATIONS:** Congenital hip luxation and sub-luxation. Hip dysplasia.

**MEASUREMENT:** Distance between knees in abducted position.

<b>SIZES:</b>	S	18-20 cm
	M	20-22 cm
	L	22-24 cm



4

## 5-KINDI HIP ABDUCTION ORTHOSIS C30

Quick-release velcro closures. The abduction is independent in each hip. Padded in waist and thighs. Duralumin structure in waist and of aluminium in cuffs. Stainless steel abduction bars.

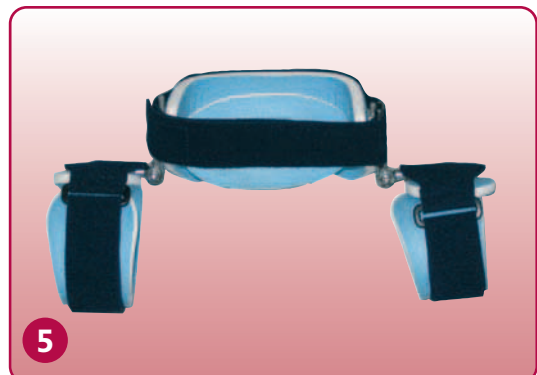
Waist band rotation of 360° with regard to its bar. Thigh cuff rotation of 360° with regard to its bar. Control of the abduction on 15° steps, independent for each thigh.

Longitudinal adaptation of the waist band and cuff with regard to their bars.

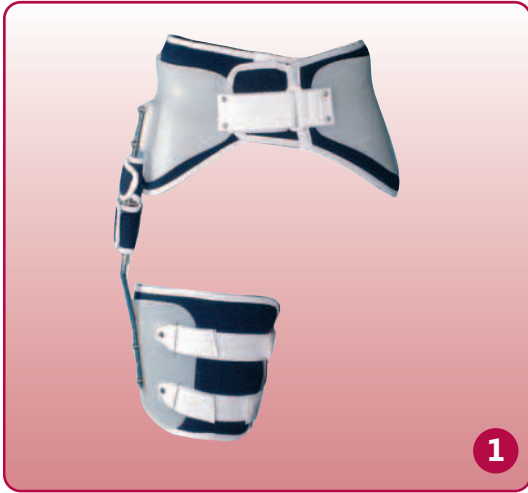
**INDICATIONS:** Sub-luxation and congenital hip luxation. Hip dysplasia.

**MEASUREMENT:** Waist and thigh perimeters.

<b>SIZES:</b>	<b>Waist</b>	<b>Cuffs</b>	<b>Bars Length</b>
1	35-40 cm	16-21 cm	5 cm
2	41-45 cm	20-25 cm	5 cm
3	46-50 cm	24-29 cm	6 cm
4	51-55 cm	28-33 cm	6 cm



5



1

**1-NEW ORTHOPRIM HIP ORTHOSIS**

Hip orthosis that can be fitted to both women and men. The joint has an adjustable range of flexion and extension from 0° to 90° of flexion (every 15°), or can be blocked on the angles required. The joint also has an adjustable abduction (0 – 15 – 30° or free).

Product supplied in 2 components.

**INDICATIONS:** Replacement of total hip prosthesis. Hip luxation. Fractures associated with hip prosthesis. Osteoporosis.

**MEASUREMENT:** Waist and thigh circumference. Can be used on both the right and left hip.

SIZES:	Waist	Thigh
1	60-90 cm	40-50 cm
2	80-110 cm	50-60 cm
3	105-135 cm	60-70 cm



2

**2-NEW ORTHOPRIM II WITH CONDYLAR SUPPORT**

The same features as the previous model, but its thigh cuff is bivalve and with condyle support.

Product supplied in 2 components.

**INDICATIONS:** Complications after total hip prosthesis. Hip luxation. Fractures associated with hip prosthesis. Osteoporosis.

**MEASUREMENT:** Waist and thigh circumference.

SIZES:	Waist	Thigh
1	60-90 cm	40-50 cm
2	80-110 cm	50-60 cm
3	105-135 cm	60-70 cm



3

**3-NEW ORTHOPRIM 3 HIP ORTHOSIS**

Hip orthosis with condylar support. Supplied assembled. Slighter articulation. Buckles of quick closing. Continuous regulation in lumbar plate and bars.

Product supplied in 2 components.

**INDICATIONS:** Replacement of total hip prosthesis. Hip luxation. Fractures associated with hip prosthesis. Osteoporosis.

**MEASUREMENT:** Waist and thigh circumference. (R, L)

SIZES:	Waist	Thigh
1	60-90 cm	40-47 cm
2	82-110 cm	45-53 cm
3	104-135 cm	51-60 cm



4

**4-TOP LINE PANTS TL06**

Blue shorts with a soft hypoallergenic towel fabric on the inside. Made of 5 mm neoprene.

Two models: women and men.

**INDICATIONS:** Traumatism of the hip and thigh, and sport activities.

**MEASUREMENT:** Waist circumference.

SIZES:	Waist
S	88-91 cm
M	92-95 cm
L	96-99 cm
XL	100-103 cm

## 1-FEMORAL SUSPENSION

### 1.1-B 50

Made of neoprene, its inferior internal finishing holds firmly the socket, avoiding slipping. Belt allows a wide regulation by Velcro fastening. (R, L).

### 1.2-B 51

Same characteristics as the B 50 but it can be used on the right and left leg.

### 1.3-B 52

Made in elastic material of strong Lycra and anti-slip neoprene at the junction with the socket. Belt allows a wide regulation by Velcro fastening. Can be used on the right and left leg.

**MEASUREMENT:** Socket external circumference and waist circumference.

SIZES:	Socket	Waist
S	40-51 cm	84-100 cm
M	48-58 cm	94-110 cm
L	55-68 cm	110-128 cm



## 2-NEOPRIM THIGH SUPPORT N502

Made with beige neoprene of 3 mm thickness. Fits thigh without sliding. Provides firm support, comfortable pressure.

**INDICATIONS:** Traumatism.

**MEASUREMENT:** Upper part of the thigh perimeter.

### SIZES:

S	42-49 cm
M	48-56 cm
L	53-62 cm
XL	58-68 cm



## 3-TOP LINE THIGH SUPPORT TL07

The Top Line thigh support is made of 3 mm neoprene, with smooth red hypoallergenic towel inside.

**INDICATIONS:** Traumatism of the thigh.

**MEASUREMENT:** Upper part of the thigh perimeter.

### SIZES:

S	44-49 cm
M	49-54 cm
L	55-60 cm
XL	60-68 cm





1

**1•NEOPRIM ADJUSTABLE KNEE BRACE N792**

Beige knee brace, open patella, with distal and proximal adjustment by means of velcro. 5 mm neoprene.

**INDICATIONS:** Sprains, arthritis, postsurgical, traumatism.

**MEASUREMENT:** Knee centre perimeter.

<b>SIZES:</b>	S	29-34 cm
	M	34-39 cm
	L	38-44 cm
	XL	42-49 cm



2

**2•NEOPRIM KNEE BRACE N720**

Beige knee brace with open patella and adjustable patella support. Medial and lateral steel stays to reinforce. 5 mm neoprene.

**INDICATIONS:** Sprains, arthritis, postsurgical, traumatism.

**MEASUREMENT:** Knee centre perimeter.

<b>SIZES:</b>	S	29-34 cm
	M	34-39 cm
	L	38-44 cm
	XL	42-49 cm



3

**3•NEOPRIM KNEE BRACE N710**

Beige knee brace, open patella and adjustable patella support. Medial and lateral hinge reinforcement. 5 mm neoprene.

**INDICATIONS:** Sprains, arthritis, postsurgical, traumatism.

**MEASUREMENT:** Knee centre perimeter.

<b>SIZES:</b>	S	29-34 cm
	M	34-39 cm
	L	38-44 cm
	XL	42-49 cm



4

**4•NEOPRIM POSTARTHROSCOPY KNEE BRACE N757**

Wrap-around style with hooks and pile closure straps, special for postarthroscopy. 3 mm neoprene.

**INDICATIONS:** Postarthroscopy.

**MEASUREMENT:** Knee centre perimeter.

<b>SIZES:</b>	S	29-34 cm
	M	34-39 cm
	L	38-44 cm
	XL	42-49 cm



## 1-NEOPRIM KNEE BRACE N717

Made with neoprene of 3mm thickness. Pull-on style with closed patella and reinforced in the front area. Beige colour

**INDICATIONS:** Sprains, arthritis, postsurgical, traumatism.

**MEASUREMENT:** Knee centre perimeter.

<b>SIZES:</b>	S	29-34 cm
	M	34-39 cm
	L	38-44 cm
	XL	42-49 cm



## 2-NEOPRIM KNEE BRACE N722

Beige knee brace with open patella, reinforced in the front area. 3 mm neoprene.

**INDICATIONS:** Sprains, arthritis, postsurgical, traumatism.

**MEASUREMENT:** Knee centre perimeter.

<b>SIZES:</b>	S	29-34 cm
	M	34-39 cm
	L	38-44 cm
	XL	42-49 cm



## 3-NEOPRIM KNEE BRACE N727

Pull-on style with closed patella. Colour beige. 5 mm neoprene.

**INDICATIONS:** Sprains, arthritis, postsurgical, traumatism.

**MEASUREMENT:** Knee centre perimeter.

<b>SIZES:</b>	S	29-34 cm
	M	34-39 cm
	L	38-44 cm
	XL	42-49 cm



## 4-NEOPRIM KNEE BRACE N732

Knee brace with open patella. 5 mm neoprene.

**INDICATIONS:** Sprains, arthritis, postsurgical, traumatism.

**MEASUREMENT:** Knee centre perimeter.

<b>SIZES:</b>	S	29-34 cm
	M	34-39 cm
	L	38-44 cm
	XL	42-49 cm



## 5-NEOPRIM KNEE BRACE N708

Beige knee brace with open patella with positionable pad. 5 mm neoprene.

**INDICATIONS:** Sub-luxation of the kneecap, chondromalacia, traumatism.

**MEASUREMENT:** Knee centre perimeter.

<b>SIZES:</b>	S	29-34 cm
	M	34-39 cm
	L	38-44 cm
	XL	42-49 cm



**1•TOP LINE CLOSED KNEE BRACE TL09**

Blue closed knee brace with soft red towel on the inside. 5 mm neoprene.

**INDICATIONS:** Sprains, arthritis, postsurgical, traumatism.

**MEASUREMENT:** Knee centre perimeter.

<b>SIZES:</b>	S	32-35 cm
	M	35-38 cm
	L	39-43 cm
	XL	43-46 cm

**2•TOP LINE OPEN KNEE BRACE TL08**

Open blue knee brace with open patella and adjustable patella support. Smooth red towel on the inside. 5 mm neoprene.

**INDICATIONS:** Sub-luxation of the kneecap, chondromalacia, traumatism.

**MEASUREMENT:** Knee centre perimeter.

<b>SIZES:</b>	S	32-35 cm
	M	35-38 cm
	L	39-43 cm
	XL	43-46 cm

**3•TOP LINE OPEN ADJUSTABLE KNEE BRACE TL23**

Open blue knee brace with adjustable top and bottom hook and pile closures. Smooth red towel on the inside. 5 mm neoprene.

**INDICATIONS:** Sprains, arthritis, postsurgical, traumatism.

**MEASUREMENT:** Knee centre perimeter.

<b>SIZES:</b>	S	33-35,5 cm
	M	36-39,5 cm
	L	40-43,5 cm
	XL	44-48,5 cm

**4•TOP LINE REINFORCED KNEE BRACE TL18**

Knee brace with open patella and adjustable patella support. Medial and lateral steel stays to reinforce. Smooth red towel on the inside. 5 mm neoprene.

**INDICATIONS:** Patella sub-luxation chondromalacia, traumatism.

**MEASUREMENT:** Knee centre perimeter.

<b>SIZES:</b>	S	29-34 cm
	M	34-39 cm
	L	38-44 cm
	XL	42-49 cm

**5•TOP LINE ARTICULATED KNEE BRACE TL10**

Knee brace with open patella and adjustable patella support. Lateral joints and support straps. Soft red towel on the inside. 5 mm neoprene.

**INDICATIONS:** Medial/lateral instability.

**MEASUREMENT:** Knee centre perimeter.

<b>SIZES:</b>	S	32-35 cm
	M	35-38 cm
	L	39-43 cm
	XL	43-46 cm

**6•TOP LINE REINFORCED TOP LINE KNEE BRACE TL20**

Knee brace with open patella and adjustable patella support, side stabilizers and support straps. Soft red towel on the inside. 5 mm neoprene.

**INDICATIONS:** Medial/lateral instability.

**MEASUREMENT:** Knee centre perimeter.

<b>SIZES:</b>	S	29-34 cm
	M	34-39 cm
	L	38-44 cm
	XL	42-49 cm

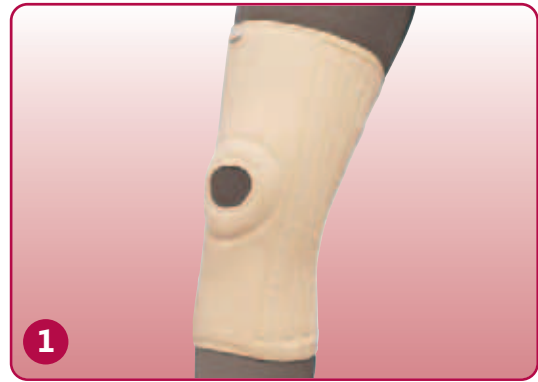
## 1-ORTHOPRIM LT OPEN KNEE BRACE 122

Knee brace with mediolateral spiral stays. Open patella with adjustable support. The circumference of the thigh and the calf are adjustable.

**INDICATIONS:** Distensions and sprains, osteoarthritis, synovitis and bursitis, chondromalacia of the kneecap, sub-luxation of the kneecap.

**MEASUREMENT:** Perimeter of the centre of the knee.

<b>SIZES:</b>	S	31-37 cm
	M	37-43 cm
	L	43-49 cm
	XL	49-55 cm



## 2-ORTHOPRIM LT OPEN KNEE BRACE 124

One piece wrap-around knee support with fabric and Velcro extension. Monocentric stainless steel articulations that can be removed, with a hyperextension block at 10° flexion. Open patella and popliteal area.

**INDICATIONS:** Swelling and sprains, osteoarthritis, rheumatoid arthritis, synovitis and bursitis, mild varus and valgus deformations.

**MEASUREMENT:** Perimeter of the centre of the knee.

<b>SIZES:</b>	S	31-37 cm
	M	37-43 cm
	L	43-49 cm
	XL	49-55 cm



## 3-ORTHOPRIM LT ARTICULATED KNEE BRACE 125

Knee brace with removable hinged side steels with hyperextension block at 10° flexion. Non-elastic adjustable thigh and calf bands.

**INDICATIONS:** Swelling and sprains, osteoarthritis, rheumatoid arthritis, synovitis and bursitis, mild varus and valgus deformations, mild genu recurvatum.

**MEASUREMENT:** Perimeter of the centre of the knee.

<b>SIZES:</b>	S	31-37 cm
	M	37-43 cm
	L	43-49 cm
	XL	49-55 cm



## 4-ORTHOPRIM LT ARTICULATED KNEE BRACE 128

One piece wrap-around knee support with fabric and Velcro extension. Polycentric aluminium articulation that can be removed, with a hyperextension block at 10° flexion. Open patella and popliteal area.

**INDICATIONS:** Swelling and sprains, osteoarthritis, rheumatoid arthritis, synovitis and bursitis, mild varus and valgus deformations.

**MEASUREMENT:** Perimeter of the centre of the knee.

<b>SIZES:</b>	S	31-37 cm
	M	37-43 cm
	L	43-49 cm
	XL	49-55 cm



## ORTHOPRIM LT BREATHABLE KNEE BRACES

**1•BISCA 023**

One piece wrap-around knee support with fabric and Velcro extension. Polycentric aluminium articulation that can be removed, with a hyperextension block at 10° flexion. Open patella, but closed popliteal area.

**INDICATIONS:** Swelling and sprains, osteoarthritis, rheumatoid arthritis, synovitis and bursitis, mild varus and valgus deformations.

<b>SIZES:</b>	S	31-40 cm
	L	40-49 cm

## ELASIL

**2•KNEE BRACE WITH SILICON INSERT ELASIL L100 1K AND 2K**

**INDICATIONS:** Sprains, arthritis, postsurgical.

**MEASUREMENT:** Knee centre perimeter.

<b>SIZES:</b>	S	32-35 cm
	M	35-38 cm
	L	38-41 cm
	XL	41-44 cm
	XXL	44-47 cm

The 1K model is a knee brace with 1 lateral stabiliser on each side and a silicon insert around the patella.

The 2K model is a knee brace with 2 lateral stabilizers on each side and a silicon insert around the patella.

## TOP LINE

**3•TOP LINE KNEE BRACE TL25**

Blue knee brace with soft red towel on the inside. 5 mm neoprene. Designed for patients with cruciate ligaments pathologies, internal as well as external only by changing the fixing straps.

**INDICATIONS:** Cruciate ligaments injuries.

**MEASUREMENT:** Knee perimeter at 90°.

<b>SIZES:</b>	S	29-34 cm
	M	34-39 cm
	L	38-44 cm
	XL	42-49 cm

## 1•MAPLE KNEE BRACES 220 AND 221

In the model 221 the 4 valves form a stable and adjustable frame. Articulation with 4 axes that imitates the anatomical movement of the knee. Preformed anodized aluminium bars. Central part made of resistant zinc-coated steel. ROM control: the degree of flexion can be adjusted from a neutral position to 90° as required by magnetic pins. Model 220 has the same features as model 221, but is wrap-around and open patella.

**INDICATIONS:** Cruciate ligaments injury.

**MEASUREMENT:** Knee perimeter when flexion at 90°. Unilateral.

<b>SIZES:</b>	S	31-37 cm
	M	37-43 cm
	L	43-49 cm
	XL	49-53 cm

## MAPLE KNEE BRACES 222, 223, 224, 225 AND 228

**MEASUREMENT:** Knee perimeter when flexion at 90°.

<b>SIZES:</b>	25-31cm	31-37cm	37-43cm	43-49cm	49-55cm	
222	XS	S	M	L	XL	Both Legs
223	XS	S	M	L	XL	Unilateral
224	XS	S	M	L	XL	Both Legs
225		S	M	L	XL	Both Legs
228		S	M	L	XL	Both Legs

## 2•MAPLE KNEE BRACE 222

Silicon pad is anatomically shaped to "hug" the distal patella. The silicone pad is incorporated into a textile casing, which is removable and adjustable for precise fit to the leg.

**INDICATIONS:** Osgood-Schlatters, chondromalacia of the kneecap.

## 3•MAPLE KNEE BRACE 223

Silicone pad is anatomically shaped to "hug" the medial or lateral side of the patella. Lateral patella Control: proximal and distal stabilization control flaps apply traction to the medial side of the patella. Medial Patella Control: proximal and distal stabilization control flaps apply traction to the lateral side of the patella. Medial right brace may be used as a lateral left brace, and a lateral right brace may be used as a medial left brace.

**INDICATIONS:** Chondromalacia of the kneecap, dislocation of kneecap.

## 4•MAPLE KNEE BRACE 224

Silicone pad is anatomically shaped to "hug" the distal and medial-lateral patella. Innovative net-like "shield" secures the silicone support pad in position.

**INDICATIONS:** Patella luxation, general pain in kneecap.

## 5•WRAP-AROUND ARTICULATED MAPLE KNEE BRACE 225

Wrap-around knee brace with fabric and Velcro extension.

Monocentric stainless steel articulations that can be extracted and hyperextension block at 10° flexion. Open popliteal area and kneecap.

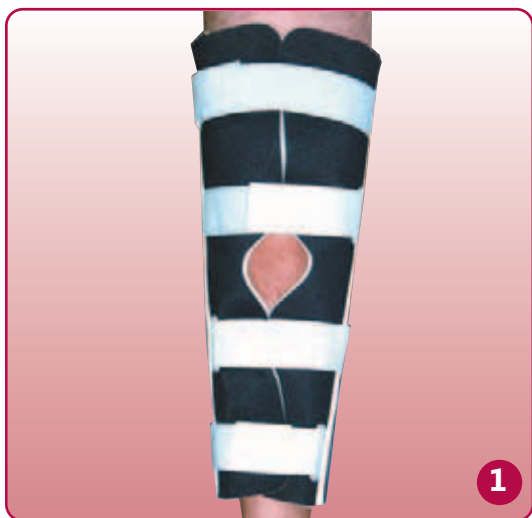
**INDICATIONS:** Swelling and sprains, osteoarthritis, rheumatoid arthritis, synovitis and bursitis, mild outward and inward deformations.

## 6•ARTICULATED MAPLE KNEE BRACE 228

The same characteristics as model 225. Polycentric aluminium articulation.

**INDICATIONS:** Swelling and sprains, osteoarthritis, rheumatoid arthritis, synovitis and bursitis, mild outward and inward deformations.





### 1-KNEE IMMOBILISER 8620

Designed in 3 panels fixed with Velcros, allowing adjustment to different circumferences of thigh, knee and calf. Small rear inserts shaped for greater comfort and fitting.

Made of 6 mm thick polyester-based foam without trimming on edges.

**INDICATIONS:** Postsurgical or posttraumatic immobilization.

**MEASUREMENT:** Thigh knee and calf perimeters.

SIZES:	Height	Kneecap
S	35 cm	34-42 cm
M	50 cm	35-44 cm
L	60 cm	37-46 cm
XL	70 cm	39-48 cm



### 2-KNEE IMMOBILISERS 8626 AND 8627

Designed in 3 panels fixed with Velcros, allowing adjustment to different circumferences of thigh, knee and calf. Small shaped rear inserts for greater comfort and better fit.

Model 8626 is made of 8 mm thick polyester-based foam with sharp edge at the side.

Model 8627 is made of 15 mm thick polyester-based foam and cotton interior with sharp edge at the side.

**INDICATIONS:** Postsurgical or posttraumatic immobilization.

**MEASUREMENT:** Thigh knee and calf perimeters.

SIZES:	Height	Kneecap
S	35 cm	34-42 cm
M	50 cm	35-44 cm
L	60 cm	37-46 cm
XL	70 cm	39-48 cm



### 3-ORTHOPRIM 951 KNEE IMMOBILISER

Knee immobiliser designed in three panels joined with Velcro, allowing adjustment to a wide range of calf, thigh and knee circumferences. The two rear steel stays are shaped for a greater comfort and fitting. Two lateral steel stays to obtain a perfect immobilisation.

**INDICATIONS:** Post-surgical or post-traumatic immobilizations.

**MEASUREMENT:** Thigh knee and calf perimeters.

SIZES:	Height	Kneecap
S	35 cm	34-42 cm
M	50 cm	35-44 cm
L	60 cm	37-46 cm
XL	70 cm	39-48 cm

## 1-NEOPRIM ROM KNEE BRACE N777

Beige knee brace with polycentric articulation and reinforced patella in the front area. 5 mm neoprene.

**MEASUREMENT:** Knee perimeter at 90°.

<b>SIZES:</b>	S	29-34 cm
	M	34-39 cm
	L	38-44 cm
	XL	42-49 cm



## 2-TOP LINE ROM KNEE BRACE TL 13

Blue knee brace with polycentric articulation and reinforced patella, with inner lining of red towel. 5 mm neoprene.

**MEASUREMENT:** Knee perimeter at 90°.

<b>SIZES:</b>	S	29-34 cm
	M	34-39 cm
	L	38-44 cm
	XL	42-49 cm



## 3-TOP LINE ADJUSTABLE ROM KNEE BRACE TL 14

Blue knee brace with polycentric articulation and proximal and distal adjustment by Velcro fitting to large anatomical differences, with a soft inner red towel. 5 mm neoprene.

**MEASUREMENT:** Knee perimeter at 90°.

<b>SIZES:</b>	S	29-34 cm
	M	34-39 cm
	L	38-44 cm
	XL	42-49 cm



## 4-TOP LINE LONG WRAP-AROUND ROM KNEE BRACE TL 15

Blue knee brace with polycentric articulation, and open patella, with 4 positioning straps and soft red towel on the inside. 5 mm neoprene.

**MEASUREMENT:** Knee perimeter at 90°.

<b>SIZES:</b>	S	33-35,5 cm
	M	36-39,5 cm
	L	40-43,5 cm
	XL	44-48,5 cm



## 5-CROM KNEE BRACES TL 16

Blue knee brace with polycentric articulation CROM and proximal and distal adjustment by Velcro fitting to large anatomical differences, with a soft inner red towel. 5 mm neoprene.

**MEASUREMENT:** Knee perimeter at 90°.

<b>SIZES:</b>	S	29-34 cm
	M	34-39 cm
	L	38-44 cm
	XL	42-49 cm



## CROM KNEE BRACES



1

**1-CROM KNEE BRACES**

Lightweight orthosis providing control of the flexion-extension (range-of-motion) and medial-lateral stability.

Easy to adjust without tools as the regulation is carried out with metallic pins joined to the articulation by plastic straps that don't come off. Monocentric articulation with protection cover in thermoplastic avoiding the pins moving.

Aluminium bars and padded of foam which can be trimmed according to the dimensions of the calf and thigh of the patient.

The range includes four models with flexion stops from 0° to 120° and extension stops from 0° to 100° and blocking from 0° to 100°, all of them on 10° steps.

REF:	Model	Height	Sizes
CROM 6L	Rom 6 straps	60cm	One size
CROM 6N	Rom 6 straps	50cm	One size
CROM 4 C	Rom 4 straps	40cm	One size



2

**2-ROM KNEE BRACE WITH 4 STRAPS**

Lightweight foam to provide a better comfort and control of the patient temperature, ideal for warm regions. Bilateral.

REF:	Model	Height	Sizes
CROMS 4L	Rom 4 straps	60cm	One size
CROMS 4N	Rom 4 straps	50cm	One size

## ORTHOSIS FOR GENU RECURVATUM



3

**3-ORTHOSIS TO CONTROL GENU RECURVATUM D50**

Made of 3 mm duralumin. The closure straps are made of cotton tape and pigskin to prevent allergic reactions.

**INDICATIONS:** Control of genu recurvatum.

**MEASUREMENT:** Perimeter 10 cm above the knee.

SIZES:	S	28-38 cm
	L	38-53 cm

## POSTARTHROSCOPY KNEE BRACE



4

**4-POSTARTHROSCOPY KNEE BRACE 4061**

Made of polyurethane foam with polyester base. Protects the knee and facilitates reabsorption of postarthroscopic oedema.

**INDICATIONS:** Postarthroscopy.

**SIZES:** One size.



## 1•NEOPRIM ANKLE SUPPORT N 512

Beige simple ankle support made of neoprene of 3 mm thickness.

**INDICATIONS:** Mild instability of the ankle.

**MEASUREMENT:** Ankle perimeter.

<b>SIZES:</b>	S	20-22 cm
	M	22-24 cm
	L	24-26 cm
	XL	26-28 cm



## 2•NEOPRIM ANKLE SUPPORT WITH ZIP N 517

Beige ankle support with zip. 3 mm neoprene.

**INDICATIONS:** Mild instability of the ankle.

**MEASUREMENT:** Ankle perimeter.

<b>SIZES:</b>	S	20-22 cm
	M	22-24 cm
	L	24-26 cm
	XL	26-28 cm



## 3•TOP LINE ANKLE SUPPORT TL 11

Blue simple ankle support with soft red towel on the inside. 3 mm neoprene.

**INDICATIONS:** Mild instability of the ankle.

**MEASUREMENT:** Ankle perimeter.

<b>SIZES:</b>	S	20-22 cm
	M	22-24 cm
	L	24-26 cm
	XL	26-28 cm



## 4•TOP LINE ANKLE SUPPORT TL 12

Blue ankle support with strap for adjustment and soft red towel on the inside. 3 mm neoprene. Left and right.

**INDICATIONS:** Mild instability of the ankle.

**MEASUREMENT:** Ankle perimeter.

<b>SIZES:</b>	S	19-21 cm
	M	20-22 cm
	L	21-23 cm
	XL	22-24 cm





### 1-ANKLE IMMOBILISER OF MIXED AIR AND GEL - AIRFIX

Two-shells orthosis for stabilization of the ankle articulation with mixed internal pads combining air and gel. The shells of resistant plastic are anatomically contoured and provide a rigid cover allowing the flexo-extension movements, and avoiding the mediolateral movements of the ankle, assuring a treatment with the maximum stability of the ankle. The shells are lined with a pad of air and gel, which can be regulated. It facilitates the variation of the quantity of air in the pads, allowing this way to control the exercised support and to adjust it to the patient's needs. Inside the pad, a gel area is offering a comfortable support on the malleolus. Easy to adjust thanks to their external velcros. Bilateral.

**INDICATIONS:** ankle sprains, instability of the articulation of the ankle and tendonitis.

**SIZE:** Single size.



### 2-ANKLE IMMOBILISER OF MIXED AIR AND GEL-AIR FOAM

The shells are lined with an adjustable air pad and foam. It facilitates the variation of the quantity of air in the pads, allowing this way to control the exercised support and to adjust it to the patient's needs.

**INDICATIONS:** ankle sprains, instability of the articulation of the ankle and tendonitis.

**SIZE:** Single size.



### 3-MEDIOLATERAL ANKLE IMMOBILISER NA540

Two-shells orthosis providing the mediolateral stabilization of the ankle by holding and keeping the ankle articulation in functional position. The shells of resistant plastic are anatomically contoured and provide a rigid cover allowing the flexo-extension movements avoiding the mediolateral movements of the ankle.

The shells are lined by a mouldable foam with memory, for a better adaptation and comfort to the patient. Easy to regulate thanks to their external velcros. Bilateral.

**INDICATIONS:** ankle sprains, instability of the articulation of the ankle and tendonitis.

**SIZE:** Single size.



### 4-MEDIOLATERAL ANKLE IMMOBILISER NA500

Two-shells orthosis providing the mediolateral stabilization of the ankle by holding and keeping the ankle articulation in functional position. The shells of resistant plastic are anatomically contoured and provide a rigid cover allowing the flexo-extension movements avoiding the mediolateral movements of the ankle. The shells are lined with a foam for a better comfort to the patient. Easy to regulate thanks to their external velcros. Bilateral. Supplied with pads in horseshoe shape for a better adaptation when reducing the inflammation.

**INDICATIONS:** ankle sprains, instability of the articulation of the ankle and tendonitis.

**SIZE:** Single size.



### 5-MEDIOLATERAL ANKLE IMMOBILISER NA510

Two-shells orthosis providing the mediolateral stabilization of the ankle by holding and keeping the ankle articulation in functional position. The shells of resistant plastic are anatomically contoured and provide a rigid cover allowing the flexo-extension movements avoiding the mediolateral movements of the ankle. The shells are lined with a foam for a better comfort to the patient. Easy to regulate thanks to their external velcros. Bilateral. Supplied with pads in horseshoe shape for a better adaptation when reducing the inflammation.

**INDICATIONS:** ankle sprains, instability of the articulation of the ankle and tendonitis.

**SIZE:** Single size.

## 1-WALKER FIXED

Designed to provide warmth, stability and compression to the ankle. Easy to apply. Two fixed bilateral uprights stabilize the foot/ankle for a complete control during the healing process. It is an economic and hygienic alternative to casting when immobilization is required.

SIZES:	Shoes N°
S	34-38
M	38-42
L	43-45



## 2-WALKER ROM

Designed to provide warmth, stability and compression to the ankle. Easy to apply. Two lateral uprights with ROM joint stabilize the foot/ankle for a complete control during the healing process. It is an economical and hygienic alternative to casting when immobilization is indicated during the healing process.

SIZES:	Shoes N°
S	34-38
M	38-42
L	43-45



# ANKLE SUPPORTS

## 1-ORTHO PRIM LB THREE-LAYERS ANKLE SUPPORT 011

Ankle support with figure-of-8 strap prone supine of a lightweight cotton material that provides warmth that alleviates injured or arthritic articulations, while preventing excessive accumulation of the heat generated during vigorous activity or sports. Blue ankle support 3 mm thick. (R, L).

**INDICATIONS:** Mild instability of the ankle.

**MEASUREMENT:** Ankle perimeter.

SIZES:	S	20-25 cm
	L	25-30 cm



## 2-ORTHO PRIM LT ELASTIC ANKLE SUPPORT 28181P

Ankle support using pull-on system (sock) with figure-of-8 elastic strap to allow flexo-extension. Three-layers material: Lycra foam and cotton. The outside is blue and the inside green. (R, L).

**INDICATIONS:** Mild instability of the ankle.

**MEASUREMENT:** Ankle perimeter.

SIZES:	S	20-25 cm
	L	25-30 cm



ANKLE SUPPORTS



1

**1-ELASIL ANKLE SUPPORT L101**

Ankle support elastic in both directions. Provides an effective massage thanks to the viscoelastic silicon insert. The ankle support is 3 mm thick.

**INDICATIONS:** Mild instability of the ankle.

**MEASUREMENT:** Ankle perimeter.

<b>SIZES:</b>	S	19-21 cm
	M	21-23 cm
	L	23-24 cm
	XL	24-26 cm
	XXL	26-29 cm



2

**2-TOBILAS 365**

Figure of 8 brace for medial and lateral control of the ankle.

**INDICATIONS:** In tired feet or those susceptible to sprains. In dislocations and as a treatment of weakness of the ligaments.

**SIZES:** SINGLE



3

**3-TOBIFIX ANKLE STABILIZER 360**

Ankle brace made of strong lightweight canvas. The system of laces provides additional medial and lateral support.

**INDICATIONS:** Mild instability of the ankle, post traumatism, inflammations like arthritis or rheumatism.

**MEASUREMENT:** Ankle perimeter.

<b>SIZES:</b>	S	20-22 cm
	M	22-24 cm
	L	24-26 cm
	XL	26-28 cm

DROP FOOT ORTHOSIS



4

**4-DROP FOOT ORTHOSIS D81**

**5-DROP FOOT ORTHOSIS D82 WITH COMPLETE INSOLE**

Manufactured from a highly durable, lightweight polypropylene with a padded touch close fastening and flared top for comfort. Trimmed lower in the malleolus area, which reduces medial-lateral stability but permits plantar flexion and contributes some dorsiflexion assist. Flexion permits patient to bring foot forward without scuffing. The orthosis can be trimmed at the edges or adjusted using a hot air gun for minor set changes.

2 options: assembled (closure straps are already assembled on the orthosis) and without assembly (closure straps are included with the product for the orthotist to assembly).

**INDICATIONS:** Flaccid drop foot, drop foot with mild spasticity

<b>SIZES:</b>	<b>Height</b>	<b>Insole</b>	
		<b>D81</b>	<b>D82</b>
XS (29-31)	24 cm	17 cm	20 cm
S (32-34)	27 cm	17 cm	22 cm
M (35-37)	28 cm	18 cm	24 cm
L (38-40)	31 cm	20 cm	26 cm
XL (41-43)	35 cm	23 cm	28 cm
XXL (44-46)	42 cm	23 cm	30 cm



5

## 1-DROP FOOT ORTHOSIS NA400

Made in injected thermoplastic, this orthosis offers the rigidity and necessary stability to avoid drop foot with limitation of the plantar flexion at 90°, although allowing the enough flexibility to obtain a dorsal flexion of the foot. It has a protective foam of the calf and Velcro strap.

Available in left or right side. White colour.

**INDICATIONS:** Indicated in patients with drop foot, due to central or peripheral paralysis. It should be prescribed by a doctor and adapted by a qualified technician before the use by the patient.

SIZES:	Length	Height
S	23 cm	29 cm
M	24,5 cm	31 cm
L	26 cm	33 cm
XL	27,5 cm	35 cm



## 2-REINFORCED DROP FOOT ORTHOSIS NA410

Made in injected thermoplastic, this orthosis offers a superior rigidity to model NA410. It has a protective foam for the calf and Velcro strap.

Available in left or right side. Grey colour.

**INDICATIONS:** Indicated in patients with drop foot, due to central or peripheral paralysis. It should be prescribed by a doctor and adapted by a qualified technician before the use by the patient.

SIZES:	Length	Height
S	23 cm	29 cm
M	24,5 cm	31 cm
L	26 cm	33 cm
XL	27,5 cm	35 cm



## 3-DORFLEX - DORSAL DROP FOOT ORTHOSIS

Made in 1mm. thickness polyethylene and padded with high density foam. Lightweight and comfortable. Allows the wearing of traditional lacing shoes. High flexibility.

**INDICATIONS:** Drop foot with mild spasticity.

**MEASUREMENT:** Shoe size. Left or right.

SIZES:	Length
S	36-39 cm
M	39-42 cm
L	42-45 cm



## POSTSURGICAL SHOE

**1•SUPER SHOE 442**

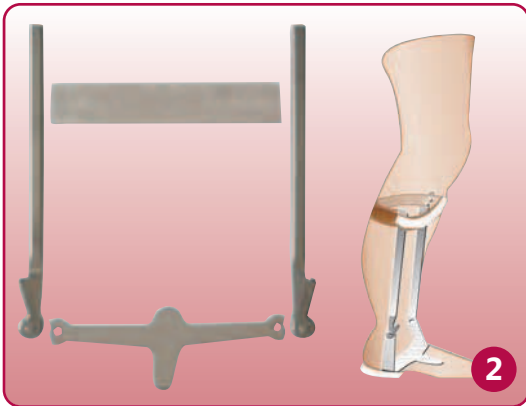
Therapeutic shoe of temporal use. Velcro closure for easy adjustment, strap can be changed of position for extra comfort. Internally padded to facilitate the normal gait. Fits left or right foot.

**INDICATIONS:** Postsurgical, foot in plaster.

**MEASUREMENT:** Shoe size.

<b>SIZES:</b>	XS	32/35 cm
	S	36/37 cm
	M	38/39 cm
	L	40/41 cm
	XL	42/43 cm
	XXL	44/45 cm

## PEDIATRIC ORTHOSIS

**2•D16 AFO KNEE BRACE WITH STIRRUP MODEL KLENZAK COMPONENTS:**

1 aluminium alloy ring (without shaping).

2 lateral uprights D12.

1 stirrup **D2**.

<b>SIZES:</b>	Ring	Upright D12	Stirrup D2
D16 1	25x2x130mm	12x5x273mm	150mm
D16 2	25x2x170mm	12x5x273mm	175mm
D16 3	40x2x170mm	16x5x385mm	200mm
D16 4	40x2x220mm	16x5x385mm	225mm
D16 5	40x2x270mm	16x5x385mm	275mm

**3•TIBIAL FRACTURE ORTHOSIS - SARMIENTO ORTHOSIS H1**

Four sizes right and left.

**SIZES:** S, M, L, XL.

**4•ARTICULATED SARMIENTO ORTHOSIS H2**

Three sizes right and left.

**SIZES:** S, M, L.

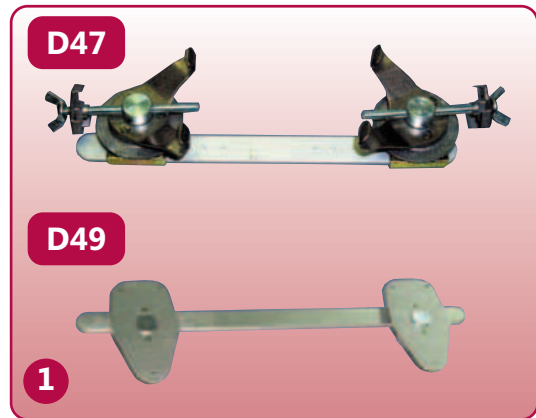
**1•DENNIS BROWN SPLINT RIVET-ON FITTING D47 OR CLAMP-ON FITTING D49**

**INDICATIONS:** Correcting the tibial rotation system, pes abductus, coxa anteversa.

**MEASUREMENT:** Distance between the centres of the shoes.

**SIZES:**                     Length of bar

S	5-15 cm
M	15-25 cm
L	25-35 cm

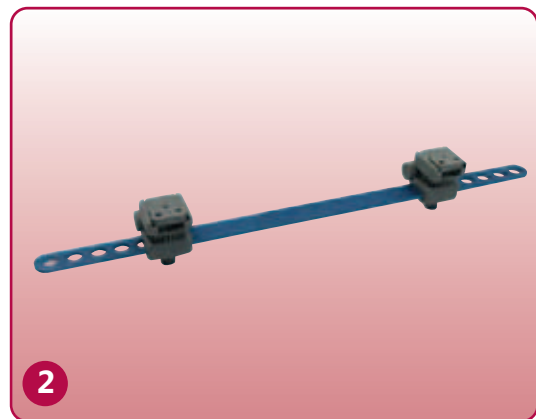


**2•TIBAX**

Orthosis for the correction of tibial rotation, adductus foot, anteverse coxa, etc. TIBAX allows the shoe adaptation in a platform on direct placing of the BEBAX orthosis, being able to act simultaneously in the front foot malformations. Supplied with 2 bars (short and long). BEBAX not included.

**INDICATIONS:** Correcting the tibial rotation system, pes abductus, coxa anteversa.

**SIZES:** Length of bar.



**3•CLUBAX**

CLUBAX is a multi-directional realignment orthosis for the treatment of congenital clubfoot. It is made up of four separate structures: thigh cuff, calf cuff, posterior sole and anterior sole. CLUBAX allows precise and immediate control of the angle of correction and prevents compensation by the overlying and underlying joints. Available with adjustable joint and mobile joint. BEBAX not included.

**INDICATIONS:** Clubfoot, tibial rotation, inward kneecap.

**MEASUREMENT:**

- A: Popliteal hollow distance to point of heel with leg in 90° flexion
- B: Thigh circumference measured 1/3 of the way up the thigh
- C: Calf circumference measured 1/3 of the way down the calf (R, L).

**SIZES:**                     A                    B                    C

S	7,5-12,5 cm	15-21 cm	11-15 cm
L	9-15,5 cm	21-27 cm	15-20 cm



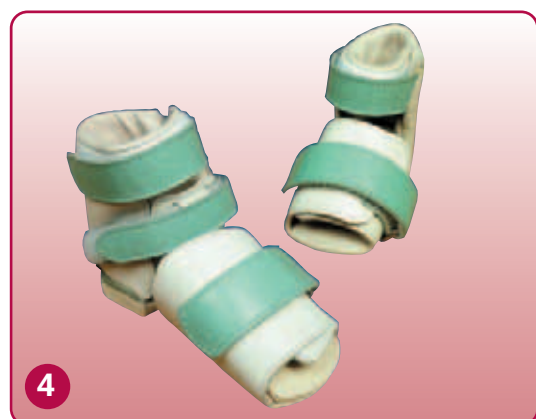
**4•BEBAX**

BEBAX is an orthopaedic bootie designed to precisely control the forefoot in relation to the hindfoot thus representing a considerable advance in the treatment of congenital foot deformities in infants. The structural separation of the forefoot and rearfoot in conjunction with the multi-directional hinge enables the position of the forefoot to be adjusted on all three planes: vertical, horizontal and oblique.

**INDICATIONS:** Metatarsal varus, metatarsal abductus, talus valgus, pes talus, pes valgus, pes varus and pes supinatus. Residual valgus of the forefeet after treatment of clubfoot. The treatment lasts approximately 35 days.

**MEASUREMENT:** Child's foot Length from heel to tip of big toe (in cm).

**SIZES:** In 10 sizes (R, L).  
From 7.5 to 10 in 0.5 cm increments.  
From 10.5 to 13.5 cm in 1 cm increments



## WHEELCHAIRS CUSHIONS



1

**1-ORTHO PRIM CUSHION - LIQUID FLOATING**

The floating cushion combines the capacity of dispersion of the pressures allowed by liquids, with the stability provided by a polyurethane foam layer of open cell, obtaining a cushion of a high level of pressure sores and a great stability. The cushion of square profile is provided with a washable outer cover with two handles to facilitate its positioning. The cover is fireproof, M1 class, and is nonskid.

REF.	DESCRIPTION
U214 1	CUSHION LIQUID FLOATING 40x40x4,5
U214 2	CUSHION LIQUID FLOATING 40x40x6
U214 3	CUSHION LIQUID FLOATING 43x43x4,5
U214 4	CUSHION LIQUID FLOATING 43x43x+6



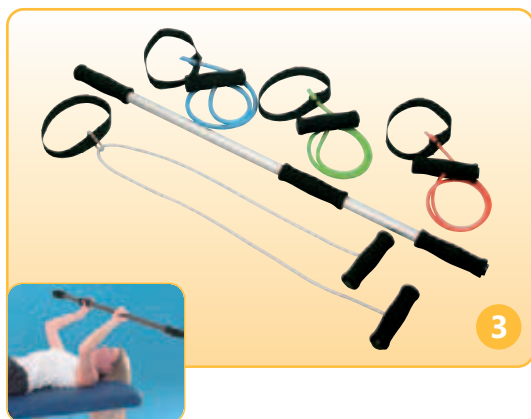
2

**2-ORTHO PRIM CUSHION - VISCOELASTIC OF DUAL DENSITIES**

The upper layer is made of viscoelastic foam designed to perfectly fit any contour getting an optimum pressure distribution and offering the maximum comfort. The second layer increases the stability and consistency. The cushion of square profile is provided with a washable outer cover with two handles to facilitate its positioning. The cover is fireproof, M1 class, and is nonskid.

REF.	DESCRIPTION
U216 1	CUSHION FOAM 40x40x4,5
U216 2	CUSHION FOAM 40x40x6
U216 3	CUSHION FOAM 43x43x4,5
U216 4	CUSHION FOAM 43x43x6

## SHOULDER REHABILITATION KIT



3

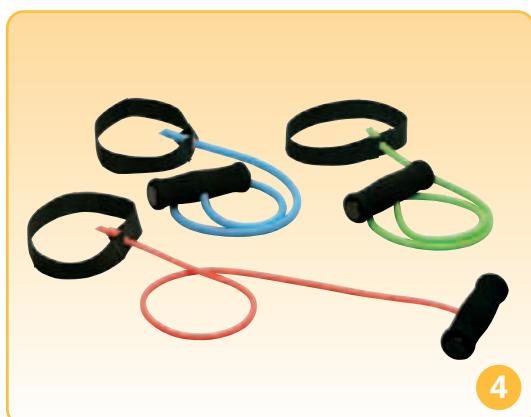
**3-KISS - SHOULDER REHABILITATION KIT**

KISS: The kit is composed by a bar with 3 handles, a pulley with 2 handles and 3 elastic tubes of different intensities, with a support and a handle each one them.

Supplied with basic exercises tables for the necessary rehabilitation.

**INDICATIONS:** Rehabilitation for neck and spine injuries

**SIZE:** only one size



4

**4-KISS 2 - SHOULDER REHABILITATION KIT**

KISS 2: Complete kit for the shoulder and arm rehabilitation. The kit is composed by 3 elastic tubes of different intensities, with a support and a handle each one. Supplied with basic exercises tables for the necessary rehabilitation.

Supplied with basic exercises tables for the necessary rehabilitation.

**INDICATIONS:** Rehabilitation for neck and spine injuries

**SIZE:** only one size





Polígono Industrial nº 1, Calle C, nº 20  
28938 Móstoles (Madrid) - SPAIN

Tel: +34 91 334 25 80  
Fas: +34 91 334 25 60

e-mail: [export@ortoprim.com](mailto:export@ortoprim.com)  
web: [www.ortoprim.com](http://www.ortoprim.com)

EAN .084 26680 84372 0



(01)08426680843720

